



Certificate of Analysis

R&D

Client Information:

CYPRESS HEMP LLC
10771 Perkins Rd
Suite A
BATON ROUGE, LA 70810

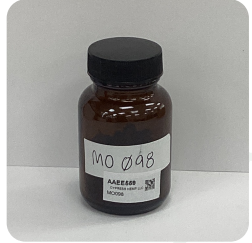
Batch # M0098
Batch Date: 2023-03-07
Extracted From: Hemp

Test Reg State: Oregon

Order # CYP230307-080001
Order Date: 2023-03-07
Sample # AAEE559

Sampling Date: 2023-03-09
Lab Batch Date: 2023-03-09
Completion Date: 2023-03-13

Initial Gross Weight: 77.010 g



Product Image

Pathogenic S
Tested

Microbiology Petrifilm
Passed

Microbiology (Petrifilm)
Specimen Weight: 994.700 mg

Passed
SOP13.003
(Petrifilm)

Dilution Factor: 1.000

Analyte	LOQ (cfu/g)	Action Level (cfu/g)	Result (cfu/g)	Analyte	LOQ (cfu/g)	Action Level (cfu/g)	Result (cfu/g)
Aerobic Bacteria	1000	10000	<1000	Total Enterobacteriaceae	100	1000	<100
E. Coli / Coliform	100	100	<100	Yeast/Mold	100	1000	<100

Pathogenic S (qPCR)
Specimen Weight: 227.550 mg

Tested
SOP13.029
(qPCR)

Dilution Factor: 1.000

Analyte	Result (cfu/g)
Salmonella	Absence in 1g

Aixia Sun Lab Director/Principal Scientist
D.H.Sc., M.Sc., B.Sc., MT (AAB)



Definitions and Abbreviations used in this report: Total Active CBD = CBD + (CBD-A * 0.877), *Total CBDV = CBDV + (CBDVA * 0.87), Total Active THC = THCA-A * 0.877 + Delta 9 THC, Total THC = THC + (THCVA * 0.87), CBG Total = (CBGA * 0.877) + CBG, CBN Total = (CBNA * 0.877) + CBN, Total CBC = CBC + (CBCA * 0.877), Total THC-O-Acetate = Delta 8 THC-O-Acetate + Delta 9 THC-O-Acetate, Total THCP = Delta8-THCP + Delta9-THCP, Other Cannabinoids Total = Total Cannabinoids - All the listed cannabinoids on the summary section, Total Detected Cannabinoids = Delta6a10a-THC + Delta8-THC + Total CBN + CBT + CBE + Delta8-THCV + Total CBG + Total CBD + Total THC + Total CBC + Total CBDV + Delta10-THC + Total THC-O-Acetate + Total THCP. (mg/ml) = Milligrams per Milliliter, LOQ = Limit of Quantitation, LOD = Limit of Detection, Dilution = Dilution Factor (ppb) = Parts per Billion, (%) = Percent, (cfu/g) = Colony Forming Unit per Gram (cfu/g) = Colony Forming Unit per Gram, , LOD = Limit of Detection, (µg/g) = Microgram per Gram (ppm) = Parts per Million, (ppm) = (µg/g), (aw) = aw (area ratio) = Area Ratio, (mg/Kg) = Milligram per Kilogram, Passed - Analyte/microbe is non-detected or at the level below the action limit, Failed - Analyte/microbe is at the level that equal or above the action limit

This report shall not be reproduced, without written approval, from ACS Laboratory. The results of this report relate only to the material or product analyzed. Test results are confidential unless explicitly waived otherwise. ACS Laboratory is accredited to the ISO/IEC 17025:2017 Standard.



Certificate of Analysis

R&D

Client Information:

CYPRESS HEMP LLC
10771 Perkins Rd
Suite A
BATON ROUGE, LA 70810

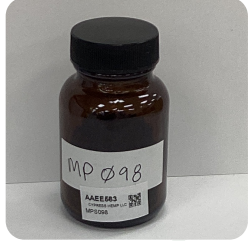
Batch # MPS098
Batch Date: 2023-03-07
Extracted From: Hemp

Test Reg State: Oregon

Order # CYP230307-080001
Order Date: 2023-03-07
Sample # AAEE563

Sampling Date: 2023-03-09
Lab Batch Date: 2023-03-09
Completion Date: 2023-03-14

Initial Gross Weight: 78.989 g



Product Image



Heavy Metals
Passed



Pesticides
Passed



Residual Solvents
Passed

Residual Solvents - FL (CBD)
Specimen Weight: 12.700 mg

Passed
SOP13.039 (GCMS)

Dilution Factor: 1.000

Analyte	LOD (ppm)	LOQ (ppm)	Action Level (ppm)	Result (ppm)	Analyte	LOD (ppm)	LOQ (ppm)	Action Level (ppm)	Result (ppm)
1,1-Dichloroethene	0.0094	0.16	8	<LOQ	Heptane	0.0013	1.39	5000	<LOQ
1,2-Dichloroethane	0.0003	0.04	5	<LOQ	Hexane	0.068	1.17	290	<LOQ
Acetone	0.015	2.08	5000	45.868	Isopropyl alcohol	0.0048	1.39	500	<LOQ
Acetonitrile	0.06	1.17	410	<LOQ	Methanol	0.0005	0.69	3000	36.580
Benzene	0.0002	0.02	2	<LOQ	Methylene chloride	0.0029	2.43	600	<LOQ
Butanes	0.4167	2.5	2000	<LOQ	Pentane	0.037	2.08	5000	<LOQ
Chloroform	0.0001	0.04	60	<LOQ	Propane	0.031	5.83	2100	<LOQ
Ethanol	0.0021	2.78	5000	<LOQ	Toluene	0.0009	2.92	890	<LOQ
Ethyl Acetate	0.0012	1.11	5000	<LOQ	Total Xylenes	0.0001	2.92	2170	<LOQ
Ethyl Ether	0.0049	1.39	5000	<LOQ	Trichloroethylene	0.0014	0.49	80	<LOQ
Ethylene Oxide	0.0038	0.1	5	<LOQ					

Aixia Sun Lab Director/Principal Scientist
D.H.Sc., M.Sc., B.Sc., MT (AAB)



Definitions and Abbreviations used in this report: Total Active CBD = CBD + (CBD-A * 0.877), *Total CBDV = CBDV + (CBDVA * 0.87), Total Active THC = THCA-A * 0.877 + Delta 9 THC, Total THC = THC + (THCVA * 0.87), CBG Total = (CBGA * 0.877) + CBG, CBN Total = (CBNA * 0.877) + CBN, Total CBC = CBC + (CBCA * 0.877), Total THC-O-Acetate = Delta 8 THC-O-Acetate + Delta 9 THC-O-Acetate, Total THCP = Delta8-THCP + Delta9-THCP, Other Cannabinoids Total = Total Cannabinoids - All the listed cannabinoids on the summary section, Total Detected Cannabinoids = Delta6a10a-THC + Delta8-THC + Total CBN + CBT + CBE + Delta8-THCV + Total CBG + Total CBD + Total THC + CBL + Total THC + Total CBC + Total CBDV + Delta10-THC + Total THC-O-Acetate + Total THCP. (mg/ml) = Milligrams per Milliliter, LOQ = Limit of Quantitation, LOD = Limit of Detection, Dilution = Dilution Factor (ppb) = Parts per Billion, (%) = Percent, (cfu/g) = Colony Forming Unit per Gram (cfu/g) = Colony Forming Unit per Gram, , LOD = Limit of Detection, (µg/g) = Microgram per Gram (ppm) = Parts per Million, (ppm) = (µg/g), (aw) = aw (area ratio) = Area Ratio, (mg/Kg) = Milligram per Kilogram, Passed - Analyte/microbe is non-detected or at the level below the action limit, Failed - Analyte/microbe is at the level that equal or above the action limit

This report shall not be reproduced, without written approval, from ACS Laboratory. The results of this report relate only to the material or product analyzed. Test results are confidential unless explicitly waived otherwise. ACS Laboratory is accredited to the ISO/IEC 17025:2017 Standard.



Certificate of Analysis

R&D

Client Information:

CYPRESS HEMP LLC
10771 Perkins Rd
Suite A
BATON ROUGE, LA 70810

Batch # MPS098
Batch Date: 2023-03-07
Extracted From: Hemp

Test Reg State: Oregon

Order # CYP230307-080001
Order Date: 2023-03-07
Sample # AAEE563

Sampling Date: 2023-03-09
Lab Batch Date: 2023-03-09
Completion Date: 2023-03-14

Initial Gross Weight: 78.989 g

Pesticides

Specimen Weight: 269.900 mg

Dilution Factor: 5.560

Analyte	LOD (ppb)	LOQ (ppb)	Action Level (ppb)	Result (ppb)	Analyte	LOD (ppb)	LOQ (ppb)	Action Level (ppb)	Result (ppb)
Abamectin	2.8800E-1	28.23	300	<LOQ	Imazalil	2.4800E-1	30	100	<LOQ
Acephate	2.3000E-2	30	3000	<LOQ	Imidacloprid	9.4000E-2	30	3000	<LOQ
Acequinocyl	9.5640E+0	48	2000	<LOQ	Kresoxim Methyl	4.2000E-2	30	1000	<LOQ
Acetamiprid	5.2000E-2	30	3000	<LOQ	Malathion	8.2000E-2	30	2000	<LOQ
Aldicarb	2.6000E-2	30	100	<LOQ	Metalaxyl	8.1000E-2	10	3000	<LOQ
Azoxystrobin	8.1000E-2	10	3000	<LOQ	Methiocarb	3.2000E-2	30	100	<LOQ
Bifenazate	1.4150E+0	30	3000	<LOQ	Methomyl	2.2000E-2	30	100	<LOQ
Bifenthrin	4.3000E-2	30	500	<LOQ	Mevinphos	2.1500E+0	30	100	<LOQ
Carbaryl	2.2000E-2	10	500	<LOQ	Myclobutanil	1.0290E+0	30	3000	<LOQ
Chlorfenapyr	8.0000E-2	48	100	<LOQ	Naled	9.5000E-2	30	500	<LOQ
Chlorpyrifos	3.5000E-2	30	100	<LOQ	Oxamyl	2.5000E-2	30	500	<LOQ
Clofentezine	1.1900E-1	30	500	<LOQ	Pacllobutrazol	6.5000E-2	30	100	<LOQ
Coumaphos	3.7700E+0	30	100	<LOQ	Parathion-methyl	1.7100E+0	48	100	<LOQ
Cyfluthrin	3.1100E+0	30	1000	<LOQ	Pentachloronitrobenzene	1.3200E+0	30	200	<LOQ
Cypermethrin	1.4490E+0	30	1000	<LOQ	Permethrin	3.4300E-1	30	1000	<LOQ
Daminozide	8.8500E-1	30	100	<LOQ	Phosmet	8.2000E-2	30	200	<LOQ
Diazinon	4.4000E-2	30	200	<LOQ	Piperonylbutoxide	2.9000E-2	30	3000	<LOQ
Dichlorvos	2.1820E+0	30	100	<LOQ	Prallethrin	7.9800E-1	30	400	<LOQ
Dimethoate	2.1000E-2	30	100	<LOQ	Propiconazole	7.0000E-2	30	1000	<LOQ
Dimethomorph	5.8300E+0	30	3000	<LOQ	Propoxur	4.6000E-2	30	100	<LOQ
Ethoprophos	3.6000E-1	30	100	<LOQ	Pyrethrins	2.3593E+1	30	1000	<LOQ
Etofenprox	1.1600E-1	30	100	<LOQ	Pyridaben	3.2000E-2	30	3000	<LOQ
Etoxazole	9.5000E-2	30	1500	<LOQ	Spinetoram	8.0000E-2	30	3000	<LOQ
Fenhexamid	5.1000E-1	30	3000	<LOQ	Spiromesifen	2.6100E-1	30	3000	<LOQ
Fenoxycarb	1.0700E-1	30	100	<LOQ	Spirotetramat	8.9000E-2	30	3000	<LOQ
Fenpyroximate	1.3800E-1	30	2000	<LOQ	Spiroxamine	1.3100E-1	30	100	<LOQ
Fipronil	1.0700E-1	30	100	<LOQ	Tebuconazole	6.7000E-2	30	1000	<LOQ
Flonicamid	5.1700E-1	30	2000	<LOQ	Thiacloprid	6.4000E-2	30	100	<LOQ
Fludioxonil	1.7400E+0	30	3000	<LOQ	Thiamethoxam	5.0000E-2	30	1000	<LOQ
Hexythiazox	4.9000E-2	30	2000	<LOQ	Trifloxystrobin	3.7000E-2	30	3000	<LOQ

Passed

SOP13.007
(LCMS/GCMS)

Heavy Metals

Specimen Weight: 251.300 mg

Dilution Factor: 198

Analyte	LOD (ppb)	LOQ (ppb)	Action Level (ppb)	Result (ppb)	Analyte	LOD (ppb)	LOQ (ppb)	Action Level (ppb)	Result (ppb)
Arsenic (As)	4.83	100	1500	237.000	Lead (Pb)	11.76	100	500	357.000
Cadmium (Cd)	.64	100	500	<LOQ	Mercury (Hg)	.58	100	3000	<LOQ

Passed

SOP13.048 (ICP-MS)

Aixia Sun
Aixia Sun Lab Director/Principal Scientist
D.H.Sc., M.Sc., B.Sc., MT (AAB)

Definitions and Abbreviations used in this report: Total Active CBD = CBD + (CBD-A * 0.877), *Total CBDV = CBDV + (CBDVA * 0.87), Total Active THC = THCA-A * 0.877 + Delta 9 THC, Total THC = THC + (THCVA * 0.87), CBG Total = (CBGA * 0.877) + CBG, CBN Total = (CBNA * 0.877) + CBN, Total CBC = CBC + (CBCA * 0.877), Total THC-O-Acetate = Delta 8 THC-O-Acetate + Delta 9 THC-O-Acetate, Total THCP = Delta8-THCP + Delta9-THCP, Other Cannabinoids Total = Total Cannabinoids - All the listed cannabinoids on the summary section, Total Detected Cannabinoids = Delta8-THC + Delta9-THC + Total CBN + CBE + CBE + Delta8-THCV + Total CBG + Total CBD + Total THCV + CBL + Total THC + Total CBC + Total CBDV + Delta10-THC + Total THC-O-Acetate + Total THCP. (mg/ml) = Milligrams per Milliliter, LOQ = Limit of Quantitation, LOD = Limit of Detection, Dilution = Dilution Factor (ppb) = Parts per Billion, (%) = Percent, (cfu/g) = Colony Forming Unit per Gram (cfu/g) = Colony Forming Unit per Gram, , LOD = Limit of Detection, (µg/g) = Microgram per Gram (ppm) = Parts per Million, (ppm) = (µg/g), (aw) = aw (area ratio) = Area Ratio, (mg/Kg) = Milligram per Kilogram, Passed - Analyte/microbe is non-detected or at the level below the action limit, Failed - Analyte/microbe is at the level that equal or above the action limit

This report shall not be reproduced, without written approval, from ACS Laboratory. The results of this report relate only to the material or product analyzed. Test results are confidential unless explicitly waived otherwise. ACS Laboratory is accredited to the ISO/IEC 17025:2017 Standard.





Certificate of Analysis

R&D

Client Information:

CYPRESS HEMP LLC
10771 Perkins Rd
Suite A
BATON ROUGE, LA 70810

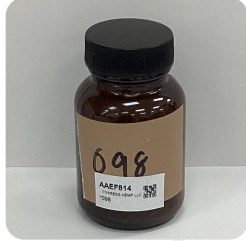
Batch # 098
Batch Date: 2023-03-01
Extracted From: Hemp

Test Reg State: Oregon

Order # CYP230316-090001
Order Date: 2023-03-16
Sample # AAEF814

Sampling Date: 2023-03-21
Lab Batch Date: 2023-03-21
Completion Date: 2023-03-24

Initial Gross Weight: 76.995 g



Product Image



Potency
Tested



HHCP
Tested

Delta 8/Delta 10 Potency 13 - (LCUV)

Specimen Weight: 206.020 mg

Analyte	LOD (%)	LOQ (%)	Result (mg/g)	(%)
CBGA	8.00E-5	0.0015	70.010	7.001
CBDA	1.00E-5	0.0015	66.960	6.696
CBD	5.40E-5	0.0015	14.340	1.434
CBG	2.48E-4	0.0015	7.340	0.734
CBN	1.40E-5	0.0015	3.960	0.396
Delta-8 THC	2.60E-5	0.0015	2.370	0.237
CBC	1.80E-5	0.0015	2.000	0.200
Delta-9 THC	1.30E-5	0.1	1.760	0.176
THCA-A	3.20E-5	0.0015	1.710	0.171
CBDV	6.50E-5	0.0015	<LOQ	<LOQ
Delta-10 THC	3.00E-6	0.0015	<LOQ	<LOQ
Delta6a10a-THC	8.47E-5	0.0015	<LOQ	<LOQ
THCV	7.00E-6	0.0015	<LOQ	<LOQ
Total Active CBD			73.060	7.306
Total Active THC			3.260	0.326

Tested

SOP13.052 (LCUV)



Potency Summary

Total Delta 8 0.237%	Total Delta 10 None Detected
Total HHC 2.354%	Total Active THC at Dry Weight 0.326%
Total Active CBD at Dry Weight 7.306%	Total CBG 6.874%
Total CBN 0.396%	Other Cannabinoids 0.200%
Total Cannabinoids 17.693%	

Summary results above show the dry weight concentration

HHCP

Specimen Weight: 206.020 mg

Dilution Factor: 7500.000

Analyte	LOD (%)	LOQ (%)	Result (mg/g)	(%)	Analyte	LOD (%)	LOQ (%)	Result (mg/g)	(%)
(9R)-HHC	3.1100E-7	7.5E-5	14.2000	1.42	9(S)-HHCP	2.5500E-6	7.5E-5	<LOQ	<LOQ
(9S)-HHC	8.7400E-7	7.5E-5	7.4200	0.742	Delta-9 THC	2.8000E-5	7.5E-5	1.7600	0.176
(±)-9β-hydroxy-HHC	4.5800E-7	7.5E-5	1.9200	0.192	Total HHC			23.5400	2.354
9(R)-HHCP	3.0900E-6	7.5E-5	<LOQ	<LOQ					

Tested

SOP13.050 (LCMS)

Aixia Sun
Aixia Sun Lab Director/Principal Scientist
D.H.Sc., M.Sc., B.Sc., MT (AAB)



Definitions and Abbreviations used in this report: Total Active CBD = CBD + (CBD-A * 0.877), *Total CBDV = CBDV + (CBDVA * 0.87), Total Active THC = THCA-A * 0.877 + Delta 9 THC, Total THC = THCV + (THCVA * 0.87), CBG Total = (CBGA * 0.877) + CBG, CBN Total = (CBNA * 0.877) + CBN, Total CBC = CBC + (CBCA * 0.877), Total THC-O-Acetate = Delta 8 THC-O-Acetate + Delta 9 THC-O-Acetate, Total THCP = Delta8-THCP + Delta9-THCP, Other Cannabinoids Total = Total Cannabinoids - All the listed cannabinoids on the summary section, Total Detected Cannabinoids = Delta6a10a-THC + Delta8-THC + Total CBN + CBT + CBE + Delta8-THCV + Total CBG + Total CBD + Total THCV + CBL + Total THC + Total CBC + Total CBDV + Delta10-THC + Total THC-O-Acetate + Total THCP. (mg/ml) = Milligrams per Milliliter, LOQ = Limit of Quantitation, LOD = Limit of Detection, Dilution = Dilution Factor (ppb) = Parts per Billion, (%) = Percent, (cfu/g) = Colony Forming Unit per Gram (cfu/g) = Colony Forming Unit per Gram, , LOD = Limit of Detection, (µg/g) = Microgram per Gram (ppm) = Parts per Million, (ppm) = (µg/g), (aw) = aw (area ratio) = Area Ratio, (mg/Kg) = Milligram per Kilogram, Passed - Analyte/microbe is non-detected or at the level below the action limit, Failed - Analyte/microbe is at the level that equal or above the action limit, *Measurement of Uncertainty = +/- 10%

This report shall not be reproduced, without written approval, from ACS Laboratory. The results of this report relate only to the material or product analyzed. Test results are confidential unless explicitly waived otherwise. ACS Laboratory is accredited to the ISO/IEC 17025:2017 Standard.