



## Certificate of Analysis Compliance Test

**Client Information:**

Cypress Hemp LLC  
10771 Perkins Rd  
Suite A  
Baton Rouge, LA 70810  
License #

**Batch Data:**

Batch # #222  
Batch Date: 2026-03-01  
Extracted From: Hemp

**Order Details:**

Test Reg State: National

**Food Permits:**

**Order #**

SUN260304-030001  
Order Date: 2026-03-04  
Sample # AAHM665

Sampling Date: 2026-03-06  
Lab Batch Date: 2026-03-06  
Completion Date: 2026-03-17

Initial Gross Weight: 44.500 g  
Net Weight: 40.000 g

Net Weight per Package:  
40000.000 mg

Net Weight per Serving:  
10000 mg  
Servings Per Package:  
4



Product Image



Potency  
Passed



HHCP  
Passed



### Potency Summary

<b>Total HHC</b>	<b>&lt;LOQ</b>	<b>Delta 9 THC</b>	<b>0.280%</b>
per Serving	0.00 mg	per Serving	28.0 mg
per Package	0.00 mg	per Package	112 mg
<b>Total Active CBD</b>	<b>7.36%</b>	<b>Total CBG</b>	<b>0.00400%</b>
per Serving	736 mg	per Serving	0.400 mg
per Package	2940 mg	per Package	1.60 mg
<b>Total CBN</b>	<b>0.00400%</b>	<b>Total Cannabinoids</b>	<b>7.69%</b>
per Serving	0.400 mg	per Serving	769 mg
per Package	1.60 mg	per Package	3080 mg
<b>Total Active THC (LA)</b>	<b>0.280%</b>	<b>Total Active THC</b>	<b>0.280%</b>
per Serving	28.0 mg	per Serving	28.0 mg
per Package	112 mg	per Package	112 mg

Aixia Sun Lab Director/Principal Scientist  
D.H.Sc., M.Sc., B.Sc., MT (AAB)



Definitions and Abbreviations used in this report: Definitions and Abbreviations used in this report: Total CBD = CBD + (CBD-A \* 0.877), Total CBDV = CBDV + (CBDVA \* 0.867), Total THC = (THCA-A \* 0.877) + Delta 9 THC, Total THCV = THCV + (THCVA \* 0.87), CBG Total = (CBGA \* 0.878) + CBG, CBN Total = (CBNA \* 0.876) + CBN, Total CBC = CBC + (CBCA \* 0.877), Total Cannabinoids = Total percentage of cannabinoids within the sample. (mg/ml) = Milligrams per Milliliter, LOQ = Limit of Quantitation, LOD = Limit of Detection, Dilution = Dilution Factor(ppb) = Parts per Billion, (%) = Percent, (cfu/g) = Colony Forming Unit per Gram, (cfu/g) = Colony Forming Unit per Gram, LOD = Limit of Detection, (µg/g) = Microgram per Gram(ppm) = Parts per Million, (ppm) = (µg/g), (aw) = Water Activity, (mg/Kg) = Milligram per Kilogram Pesticides indicators: 1=FL LOD/LOQ/AL; 2= CO LOD/LOQ/AL; 3 = CO LOD/ACS CO LOQ

This report shall not be reproduced, without written approval, from ACS Laboratory. The results of this report relate only to the material or product analyzed. Test results are confidential unless explicitly waived otherwise. ACS Laboratory is accredited to the ISO/IEC 17025:2017 Standard. This facility meets the human health and food safety sanitation requirements of the Kentucky Cabinet for Health and Family Services as documented by KYCHFS.



# Certificate of Analysis

## Compliance Test

**Client Information:**

Cypress Hemp LLC  
10771 Perkins Rd  
Suite A  
Baton Rouge, LA 70810  
License #

**Batch Data:**

Batch # #222  
Batch Date: 2026-03-01  
Extracted From: Hemp

**Order Details:**

Test Reg State: National

**Food Permits:**

**Order #**

SUN260304-030001  
Order Date: 2026-03-04  
Sample # AAHM665

**Sampling Date:** 2026-03-06

Lab Batch Date: 2026-03-06  
Completion Date: 2026-03-17

**Initial Gross Weight:** 44.500 g

Net Weight: 40.000 g

**Net Weight per Package:**

40000.000 mg

**Net Weight per Serving:**

10000 mg  
Servings Per Package:  
4



**National Panel Potency**  
Specimen Weight: 1512.400 mg

**Passed**

SOP13.001,SOP13.050  
(LCUV,LCMS)

Pieces For Panel: 4

Analyte	Dilution (1:n)	LOD (mg/g)	LOQ (%)	Result (mg/g)	(%)	Per Serving (mg)	Per Package (mg)
CBD	10.000	.0000421	0.002	73.6	7.36	736	2940
Delta-9 THC	10.000	.0000571	0.002	2.80	0.280	28.0	112
CBDV	10.000	.0000614	0.002	0.320	0.0320	3.20	12.8
CBC	10.000	.0000514	0.002	0.0803	0.00800	0.803	3.21
CBG	10.000	.0000507	0.002	0.0400	0.00400	0.400	1.60
CBN	10.000	.0000597	0.002	0.0400	0.00400	0.400	1.60
CBGM	1.000	.000116	0.002	0.0300	0.00300	0.300	1.20
THCV	10.000	.0000276	0.002	0.0300	0.00300	0.300	1.20
THCB	10.000	0.00195	0.002	0.0200	0.00200	0.200	0.800
(6aR,9R) Delta-10 THC	1.000	0.0015	0.002	<LOQ	<LOQ	0.00	0.00
(6aR,9S) Delta-10 THC	1.000	0.0015	0.002	<LOQ	<LOQ	0.00	0.00
Abnormal CBD	10.000	0.015	0.002	<LOQ	<LOQ	0.00	0.00
CBCA	10.000	0.000107	0.002	<LOQ	<LOQ	0.00	0.00
CBCV	1.000	.0000307	0.002	<LOQ	<LOQ	0.00	0.00
CBDA	10.000	.0000143	0.002	<LOQ	<LOQ	0.00	0.00
CBDVA	10.000	0.000014	0.002	<LOQ	<LOQ	0.00	0.00
CBE	1.000	.0000483	0.002	<LOQ	<LOQ	0.00	0.00
CBGA	10.000	.0000847	0.002	<LOQ	<LOQ	0.00	0.00
CBGV	1.000	.0000287	0.002	<LOQ	<LOQ	0.00	0.00
CBL	10.000	.0000919	0.002	<LOQ	<LOQ	0.00	0.00
CBLA	10.000	0.015	0.001	<LOQ	<LOQ	0.00	0.00
CBNA	10.000	0.000014	0.002	<LOQ	<LOQ	0.00	0.00
CBT	10.000	0.000325	0.004	<LOQ	<LOQ	0.00	0.00
CBV	1.000	.0000670	0.002	<LOQ	<LOQ	0.00	0.00
Delta-10 THC	10.000	0.0015	0.002	<LOQ	<LOQ	0.00	0.00
Delta-8 THC	10.000	.0000808	0.002	<LOQ	<LOQ	0.00	0.00
Delta-8 THC-O Acetate	10.000	0.000027	0.002	<LOQ	<LOQ	0.00	0.00
Delta-8 THCV	10.000	0.0015	0.002	<LOQ	<LOQ	0.00	0.00
Delta-9 THC-O Acetate	10.000	0.003	0.002	<LOQ	<LOQ	0.00	0.00
Delta6a10a-THC	1.000	0.0015	0.001	<LOQ	<LOQ	0.00	0.00
Delta8-THCA-A	10.000	0.015	0.001	<LOQ	<LOQ	0.00	0.00
Delta8-THCP	10.000	0.0015	0.002	<LOQ	<LOQ	0.00	0.00
Delta9-THCP	10.000	0.0012	0.002	<LOQ	<LOQ	0.00	0.00
Exo-THC	10.000	0.000054	0.002	<LOQ	<LOQ	0.00	0.00
THCA-A	10.000	0.000938	0.004	<LOQ	<LOQ	0.00	0.00
THCH	10.000	0.00195	0.002	<LOQ	<LOQ	0.00	0.00
	10.000	0.015	0.002	<LOQ	<LOQ	0.00	0.00
	10.000			2.80	0.280	0.00	0.00
	10.000			73.6	7.36	0.00	0.00

Aixia Sun, Lab Director/Principal Scientist  
D.H.Sc., M.Sc., B.Sc., MT (AAB)

**Definitions are found on page 1**

This report shall not be reproduced, without written approval, from ACS Laboratory. The results of this report relate only to the material or product analyzed. Test results are confidential unless explicitly waived otherwise. ACS Laboratory is accredited to the ISO/IEC 17025:2017 Standard. This facility meets the human health and food safety sanitation requirements of the Kentucky Cabinet for Health and Family Services as documented by KYCHFS.





## Certificate of Analysis Compliance Test

**Client Information:**

Cypress Hemp LLC  
10771 Perkins Rd  
Suite A  
Baton Rouge, LA 70810  
License #

**Batch Data:**

Batch # #222  
Batch Date: 2026-03-01  
Extracted From: Hemp

**Order Details:**

Test Reg State: National

**Food Permits:**

**Order #**

SUN260304-030001  
Order Date: 2026-03-04  
Sample # AAHM665

**Sampling Date:** 2026-03-06

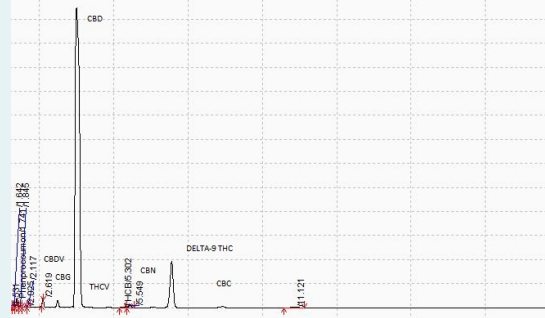
Lab Batch Date: 2026-03-06  
Completion Date: 2026-03-17

**Initial Gross Weight:** 44.500 g  
**Net Weight:** 40.000 g

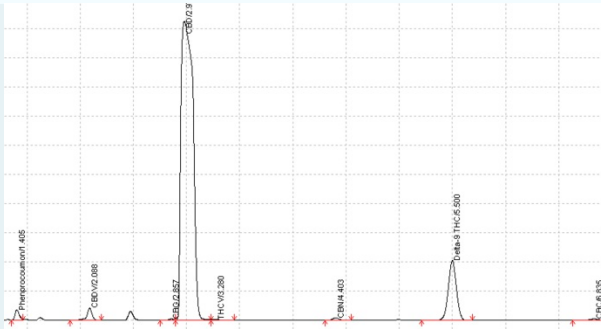
**Net Weight per Package:**  
40000.000 mg

**Net Weight per Serving:**  
10000 mg  
**Servings Per Package:**  
4

National Panel Potency



National Panel Potency



*Aixia Sun*  
Aixia Sun Lab Director/Principal Scientist  
D.H.Sc., M.Sc., B.Sc., MT (AAB)

**Definitions are found on page 1**

This report shall not be reproduced, without written approval, from ACS Laboratory. The results of this report relate only to the material or product analyzed. Test results are confidential unless explicitly waived otherwise. ACS Laboratory is accredited to the ISO/IEC 17025:2017 Standard. This facility meets the human health and food safety sanitation requirements of the Kentucky Cabinet for Health and Family Services as documented by KYCHFS.





## Certificate of Analysis

### Compliance Test

<b>Client Information:</b> Cypress Hemp LLC 10771 Perkins Rd Suite A Baton Rouge, LA 70810 License #	<b>Batch Data:</b> Batch # #222 Batch Date: 2026-03-01 Extracted From: Hemp	<b>Order Details:</b> Test Reg State: National	<b>Food Permits:</b>
---	--	---	----------------------

<b>Order #</b> SUN260304-030001 <b>Order Date:</b> 2026-03-04 <b>Sample #</b> AAHM665	<b>Sampling Date:</b> 2026-03-06 <b>Lab Batch Date:</b> 2026-03-06 <b>Completion Date:</b> 2026-03-17	<b>Initial Gross Weight:</b> 44.500 g <b>Net Weight:</b> 40.000 g	<b>Net Weight per Package:</b> 40000.000 mg	<b>Net Weight per Serving:</b> 10000 mg <b>Servings Per Package:</b> 4
--	---	--	--	---

HHCP		Passed							
Specimen Weight: 1512.400 mg		SOP13.001,SOP13.050 (LCUV,LCMS)							
Analyte	LOD (%)	LOQ (%)	Result (mg/g)	(%)	Analyte	LOD (%)	LOQ (%)	Result (mg/g)	(%)
(9R)-HHC	0.000	0.075	<LOQ	<LOQ	9(S)-HHCP	0.000	0.075	<LOQ	<LOQ
(9S)-HHC	0.000	0.075	<LOQ	<LOQ	Delta-8 THC methyl ether	0.000	0.075	<LOQ	<LOQ
(±)-9β-hydroxy-HHC	0.000	0.075	<LOQ	<LOQ	Delta-9 THC methyl ether	0.000	0.075	<LOQ	<LOQ
1(R)-H4-CBD	0.000	0.15	<LOQ	<LOQ	H2-CBD	0.000	0.075	<LOQ	<LOQ
1(S)-H4-CBD	0.000	0.15	<LOQ	<LOQ	Total HHC	0.000	0.075	<LOQ	<LOQ
9(R)-HHCP	0.000	0.075	<LOQ	<LOQ					

*Aixia Sun*  
Aixia Sun Lab Director/Principal Scientist  
D.H.Sc., M.Sc., B.Sc., MT (AAB)



**Definitions are found on page 1**  
This report shall not be reproduced, without written approval, from ACS Laboratory. The results of this report relate only to the material or product analyzed. Test results are confidential unless explicitly waived otherwise. ACS Laboratory is accredited to the ISO/IEC 17025:2017 Standard. This facility meets the human health and food safety sanitation requirements of the Kentucky Cabinet for Health and Family Services as documented by KYCHFS.



## Certificate of Analysis

### Compliance Test

<b>Client Information:</b> Cypress Hemp LLC 10771 Perkins Rd Suite A Baton Rouge, LA 70810 License #	<b>Batch Data:</b> Batch # #222 Batch Date: 2026-03-01 Extracted From: Hemp	<b>Order Details:</b> Test Reg State: National	<b>Food Permits:</b>
---	--	---	----------------------

<b>Order #</b> SUN260304-030001 <b>Order Date:</b> 2026-03-04 <b>Sample #</b> AAHM665	<b>Sampling Date:</b> 2026-03-06 <b>Lab Batch Date:</b> 2026-03-06 <b>Completion Date:</b> 2026-03-17	<b>Initial Gross Weight:</b> 44.500 g <b>Net Weight:</b> 40.000 g	<b>Net Weight per Package:</b> 40000.000 mg	<b>Net Weight per Serving:</b> 10000 mg <b>Servings Per Package:</b> 4
--	---	--	--	---

HHCP at Dry Weight					Passed				
Specimen Weight: 1512.400 mg					SOP13.001,SOP13.050 (LCUV,LCMS)				
Dilution Factor: 10000.000									
Analyte	LOD (%)	LOQ (%)	Result (mg/g)	(%)	Analyte	LOD (%)	LOQ (%)	Result (mg/g)	(%)
(9R)-HHC	0.000	0.075	<LOQ	<LOQ	9(S)-HHCP	0.000	0.075	<LOQ	<LOQ
(9S)-HHC	0.000	0.075	<LOQ	<LOQ	Delta-8 THC methyl ether	0.000	0.075	<LOQ	<LOQ
(±)-9β-hydroxy-HHC	0.000	0.075	<LOQ	<LOQ	Delta-9 THC methyl ether	0.000	0.075	<LOQ	<LOQ
1(R)-H4-CBD	0.000	0.15	<LOQ	<LOQ	H2-CBD	0.000	0.075	<LOQ	<LOQ
1(S)-H4-CBD	0.000	0.15	<LOQ	<LOQ	Total HHC		0.075	<LOQ	<LOQ
9(R)-HHCP	0.000	0.075	<LOQ	<LOQ					

Aixia Sun    Lab Director/Principal Scientist  
D.H.Sc., M.Sc., B.Sc., MT (AAB)



**Definitions are found on page 1**  
This report shall not be reproduced, without written approval, from ACS Laboratory. The results of this report relate only to the material or product analyzed. Test results are confidential unless explicitly waived otherwise. ACS Laboratory is accredited to the ISO/IEC 17025:2017 Standard. This facility meets the human health and food safety sanitation requirements of the Kentucky Cabinet for Health and Family Services as documented by KYCHFS.