



## Certificate of Analysis

Compliance Test

**Client Information:**

**CYPRESS HEMP LLC**  
10771 Perkins Rd  
Suite A  
BATON ROUGE, LA 70810

Batch # 1483  
Batch Date: 2025-12-11  
Extracted From: Hemp

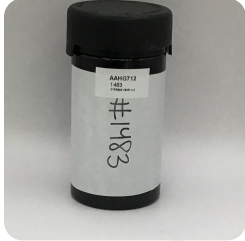
Test Reg State: Oregon

Order # CYP251211-130001  
Order Date: 2025-12-11  
Sample # AAHG712

Sampling Date: 2025-12-17  
Lab Batch Date: 2025-12-17  
Completion Date: 2025-12-28

Initial Gross Weight: 89.800 g  
Net Weight: 56.300 g

Number of Units: 1  
Net Weight per Unit: 3753.333 mg



Product Image



**Potency  
Tested**



**Potency 10**

Specimen Weight: 1501.800 mg

**Tested**

SOP13.001 (LCUV)

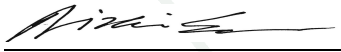


**Potency Summary**

<b>Total Active THC</b> 0.216% 8.107 mg	<b>Total Active CBD</b> - None Detected
<b>Total CBG</b> 0.055% 2.064 mg	<b>Total CBN</b> - None Detected
<b>Total Cannabinoids</b> 0.271% 10.172 mg	

**Pieces For Panel: 15**

Analyte	LOD (mg/g)	LOQ (%)	Result (mg/g)	(%)
Delta-9 THC	1.30E-5	0.015	2.160	0.216
CBG	2.48E-4	0.015	0.550	0.055
CBC	1.80E-5	0.015	<LOQ	<LOQ
CBD	5.40E-5	0.015	<LOQ	<LOQ
CBDA	1.00E-5	0.015	<LOQ	<LOQ
CBDV	6.50E-5	0.015	<LOQ	<LOQ
CBGA	8.00E-5	0.015	<LOQ	<LOQ
CBN	1.40E-5	0.015	<LOQ	<LOQ
THCA-A	3.20E-5	0.015	<LOQ	<LOQ
THCV	7.00E-6	0.015	<LOQ	<LOQ
Total Active CBD			<LOQ	<LOQ
Total Active THC			2.160	0.216

  
Aixa Sun Lab Director/Principal Scientist  
D.H.Sc., M.Sc., B.Sc., MT (AAB)



Definitions and Abbreviations used in this report: Total Active CBD = CBD + (CBD-A \* 0.877), \*Total CBDV = CBDV + (CBDVA \* 0.867), Total Active THC = THCA-A \* 0.877 + Delta 9 THC, Total THCV = THCV + (THCVA \* 0.87), CBG Total = (CBGA \* 0.878) + CBG, CBN Total = (CBNA \* 0.876) + CBN, Total CBC = CBC + (CBCA \* 0.877), Total THC-O-Acetate = Delta 8 THC-O-Acetate + Delta 9 THC-O-Acetate, Total THCP = Delta8-THCP + Delta9-THCP, Total Cannabinoids = Total percentage of cannabinoids within the sample. (mg/ml) = Milligrams per Milliliter, LOQ = Limit of Quantitation, LOD = Limit of Detection, Dilution = Dilution Factor, (ppb) = Parts per Billion, (%) = Percent, (cfu/g) = Colony Forming Unit per Gram, (µg/g) = Microgram per Gram, (ppm) = Parts per Million, (ppm) = (µg/g), (aw) = Water Activity, (mg/Kg) = Milligram per Kilogram. ACS uses simple acceptance criteria. Passed - Analyte/microbe is not detected or is at the level below the action limit per OR rule OAR 333-007-0390, OAR 333-007-0400. Failed - Analyte/microbe is at the level that equal or above the action limit per OR rule OAR 333-007-0390, OAR 333-007-0400 The results apply to the sample as received.

This report shall not be reproduced, without written approval, from ACS Laboratory. The results of this report relate only to the material or product analyzed. Test results are confidential unless explicitly waived otherwise. ACS Laboratory is accredited to the ISO/IEC 17025:2017 Standard.