



**Certificate of Analysis**  
Compliance Test

Client Information:

**CYPRESS HEMP LLC**  
10771 Perkins Rd  
Suite A  
BATON ROUGE, LA 70810

Batch # 1535  
Batch Date: 2026-03-16  
Extracted From: Hemp

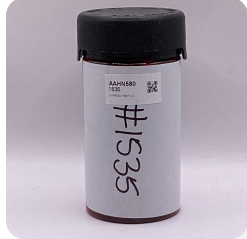
Test Reg State: Louisiana

Order # CYP260316-110001  
Order Date: 2026-03-16  
Sample # AAHN580  
Serving Number: 15.00000

Sampling Date: 2026-03-20  
Lab Batch Date: 2026-03-20  
Completion Date: 2026-03-23

Initial Gross Weight: 132.200 g  
Net Weight: 98.200 g

Number of Units: 1  
Net Weight per Package: 98200.000 mg  
Net Weight per Serving: 6546.6667 mg



Potency  
Tested

Product Image

**Potency 10**  
Specimen Weight: 1530.700 mg

**Tested**  
SOP13.001 (LCUV)

**Potency Summary**

Pieces For Panel: 15

Analyte	LOD (mg/g)	LOQ (%)	Result (mg/g)	(%)
CBN	1.40E-5	0.0015	3.0900	0.3090
Delta-9 THC	1.30E-5	0.0015	2.7700	0.2770
CBD	5.40E-5	0.0015	0.0200	0.0020
THCV	7.00E-6	0.0015	0.0200	0.0020
CBC	1.80E-5	0.0015	<LOQ	<LOQ
CBDA	1.00E-5	0.0015	<LOQ	<LOQ
CBDV	6.50E-5	0.0015	<LOQ	<LOQ
CBG	2.48E-4	0.0015	<LOQ	<LOQ
CBGA	8.00E-5	0.0015	<LOQ	<LOQ
THCA-A	3.20E-5	0.0015	<LOQ	<LOQ
Total Active CBD			0.020	0.002
Total Active THC			2.7700	0.277

<b>Delta 9 THC per Serving</b> 0.277% 18.134 mg	<b>Total Active CBD per Serving</b> 0.002% 0.131 mg
<b>Total CBG per Serving</b> None Detected	<b>Total CBN per Serving</b> 0.309% 20.229 mg
<b>Total Cannabinoids per Serving</b> 0.590% 38.625 mg	<b>Total Active CBD Per Package</b> 0.002% 1.964 mg
<b>Total Active THC per Serving</b> 0.277% 18.134 mg	<b>Total Active THC Per Package</b> 0.277% 272.014 mg
<b>Delta 9 THC per Package</b> 0.277% 272.014 mg	

Aixia Sun Lab Director/Principal Scientist  
D.H.Sc., M.Sc., B.Sc., MT (AAB)



Definitions and Abbreviations used in this report: Total Active CBD = CBD + (CBD-A \* 0.877), \*Total CBDV = CBDV + (CBDVA \* 0.867), Total Delta-9 THC = Delta-9 THC + THCA, Total Active THC = Total Delta-9 THC + Delta6a10a-THC + Delta-8 THC + Delta-10 THC + Delta-8 THC-O-Acetate + THC-O-Acetate + Delta-10 THC-O-Acetate, Total THCV = THCV + (THCVA \* 0.877), CBG Total = (CBGA \* 0.878) + CBG, CBN Total = (CBNA \* 0.876) + CBN, Total CBC = CBC + (CBCA \* 0.877), Total THC-O-Acetate = Delta 8 THC-O-Acetate + Delta 9 THC-O-Acetate, Total THCP = Delta8-THCP + Delta9-THCP, Total Cannabinoids = Total percentage of cannabinoids within the sample. (mg/ml) = Milligrams per Milliliter, LOQ = Limit of Quantitation, LOD = Limit of Detection, Dilution = Dilution Factor, (ppb) = Parts per Billion, (%) = Percent, (cfu/g) = Colony Forming Unit per Gram, (µg/g) = Microgram per Gram, (ppm) = Parts per Million, (ppm) = (µg/g), (aw) = Water Activity, (mg/Kg) = Milligram per Kilogram. ACS uses simple acceptance criteria. Passed - Analyte/microbe is not detected or is at the level below the action limit per LA rule R.S., 40:4(A)(13), R.S. 3:1483, R.S. 40:604. Failed - Analyte/microbe is at the level that equal or above the action limit per LA rule R.S., 40:4(A)(13), R.S. 3:1483, R.S. 40:604 The results apply to the sample as received.

This report shall not be reproduced, without written approval, from ACS Laboratory. The results of this report relate only to the material or product analyzed. Test results are confidential unless explicitly waived otherwise. ACS Laboratory is accredited to the ISO/IEC 17025:2017 Standard.



**Certificate of Analysis**  
Compliance Test

Client Information:

**CYPRESS HEMP LLC**  
10771 Perkins Rd  
Suite A  
BATON ROUGE, LA 70810

Batch # 1535  
Batch Date: 2026-03-16  
Extracted From: Hemp

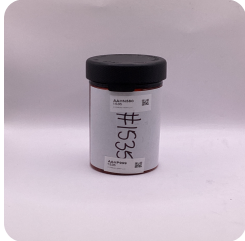
Test Reg State: Louisiana

Order # CYP260417-010001  
Order Date: 2026-04-17  
Sample # AAHP999

Sampling Date: 2026-04-27  
Lab Batch Date: 2026-04-27  
Completion Date: 2026-04-29

Initial Gross Weight: 132.200 g  
Net Weight: 98.200 g

Number of Units: 1  
Net Weight per Package: 98200.000 mg  
Serving Number: 15.00000



Product Image

<b>Heavy Metals</b> Passed	<b>Pesticides</b> Passed	<b>Residual Solvents</b> Passed	<b>Pathogenic Microbiology</b> Passed	<b>Microbiology (qPCR)</b> Passed
-------------------------------	-----------------------------	------------------------------------	--	--------------------------------------

**PCR Total Yeast and Mold**  
Specimen Weight: 498.800 mg

**Passed**  
SOP13.017 (qPCR)

Dilution Factor: 8.000

Analyte	LOQ (cfu/g)	Action Level (cfu/g)	Result (cfu/g)
Total Yeast/Mold	1000	100000	<LOQ

**Pathogenic Microbiology SAE (MicroArray) Multi State**  
Specimen Weight: 1033.700 mg

**Passed**  
SOP13.019 (Micro Array)

Dilution Factor: 1.000

Analyte	Action Level (cfu/g)	Result (cfu/g)	Analyte	Action Level (cfu/g)	Result (cfu/g)
E. Coli	1	Absence in 1g	Shiga toxin-producing E. coli (STEC)	1	Absence in 1g
Salmonella	1	Absence in 1g			

Aixia Sun Lab Director/Principal Scientist  
D.H.Sc., M.Sc., B.Sc., MT (AAB)



Definitions and Abbreviations used in this report: Total Active CBD = CBD + (CBD-A \* 0.877), \*Total CBDV = CBDV + (CBDVA \* 0.867), Total Delta-9 THC = Delta-9 THC + THCA, Total Active THC = Total Delta-9 THC + Delta6a10a-THC + Delta-8 THC + Delta-10 THC + Delta-8 THC-O-Acetate + THC-O-Acetate + Delta-10 THC-O-Acetate, Total THCV = THCV + (THCVA \* 0.877), CBG Total = (CBGA \* 0.878) + CBG, CBN Total = (CBNA \* 0.876) + CBN, Total CBC = CBC + (CBCA \* 0.877), Total THC-O-Acetate = Delta 8 THC-O-Acetate + Delta 9 THC-O-Acetate, Total THCP = Delta8-THCP + Delta9-THCP, Total Cannabinoids = Total percentage of cannabinoids within the sample. (mg/ml) = Milligrams per Milliliter, LOQ = Limit of Quantitation, LOD = Limit of Detection, Dilution = Dilution Factor, (ppb) = Parts per Billion, (%) = Percent, (cfu/g) = Colony Forming Unit per Gram, (µg/g) = Microgram per Gram, (ppm) = Parts per Million, (ppm) = (µg/g), (aw) = Water Activity, (mg/Kg) = Milligram per Kilogram. ACS uses simple acceptance criteria. Passed - Analyte/microbe is not detected or is at the level below the action limit per LA rule R.S., 40:4(A)(13), R.S. 3:1483, R.S. 40:604. Failed - Analyte/microbe is at the level that equal or above the action limit per LA rule R.S., 40:4(A)(13), R.S. 3:1483, R.S. 40:604 The results apply to the sample as received.

This report shall not be reproduced, without written approval, from ACS Laboratory. The results of this report relate only to the material or product analyzed. Test results are confidential unless explicitly waived otherwise. ACS Laboratory is accredited to the ISO/IEC 17025:2017 Standard.



**Certificate of Analysis**  
Compliance Test

**Client Information:**

**CYPRESS HEMP LLC**  
10771 Perkins Rd  
Suite A  
BATON ROUGE, LA 70810

Batch # 1535  
Batch Date: 2026-03-16  
Extracted From: Hemp  
Test Reg State: Louisiana

Order # CYP260417-010001      Sampling Date: 2026-04-27      Initial Gross Weight: 132.200 g      Number of Units: 1  
Order Date: 2026-04-17      Lab Batch Date: 2026-04-27      Net Weight: 98.200 g      Net Weight per Package: 98200.000 mg  
Sample # AAHP999      Completion Date: 2026-04-29      Serving Number: 15.00000



**Heavy Metals - LA**

Specimen Weight: 253.800 mg

**Passed**  
SOP13.048 (ICP-MS)

Dilution Factor: 197.006

Analyte	LOD (ppm)	LOQ (ppm)	Action Level (ppm)	Result (ppm)	Analyte	LOD (ppm)	LOQ (ppm)	Action Level (ppm)	Result (ppm)
Arsenic (As)	.00483	0.1	10	<LOQ	Lead (Pb)	0.0058	0.1	10	<LOQ
Cadmium (Cd)	.00064	0.1	4.1	<LOQ	Mercury (Hg)	.01176	0.1	2	<LOQ



**Residual Solvents - LA (CBD)**

Specimen Weight: 260.900 mg

**Passed**  
SOP13.039 (GCMS-HS)

Dilution Factor: 1.000

Analyte	LOD (ppm)	LOQ (ppm)	Action Level (ppm)	Result (ppm)	Analyte	LOD (ppm)	LOQ (ppm)	Action Level (ppm)	Result (ppm)
1,1-Dichloroethene	0.009	0.16	8	<LOQ	Heptane	0.001	1.39	500	<LOQ
1,2-Dichloroethane	0.000	0.04	5	<LOQ	Hexane	0.068	1.17	10	<LOQ
Acetone	0.015	2.08	5000	<LOQ	Isopropyl alcohol	0.005	1.39	500	15.7
Acetonitrile	0.060	1.17	410	<LOQ	Methanol	0.001	0.69	3000	36.8
Benzene	0.000	0.02	1	<LOQ	Methylene chloride	0.003	2.43	600	<LOQ
Butanes	0.417	2.5	800	<LOQ	Pentane	0.037	2.08	5000	<LOQ
Chloroform	0.000	0.04	60	<LOQ	Propane	0.031	5.83	2100	<LOQ
Ethanol	0.002	2.78	5000	3110	Toluene	0.001	2.92	1	<LOQ
Ethyl Acetate	0.001	1.11	5000	59.6	Total Xylenes	0.000	2.92	1	<LOQ
Ethyl Ether	0.005	1.39	5000	<LOQ	Trichloroethylene	0.001	0.49	80	<LOQ
Ethylene Oxide	0.004	0.1	5	<LOQ					

*Aixia Sun*

Aixia Sun Lab Director/Principal Scientist  
D.H.Sc., M.Sc., B.Sc., MT (AAB)

Definitions are found on page 1

This report shall not be reproduced, without written approval, from ACS Laboratory. The results of this report relate only to the material or product analyzed. Test results are confidential unless explicitly waived otherwise. ACS Laboratory is accredited to the ISO/IEC 17025:2017 Standard.





**Certificate of Analysis**  
Compliance Test

**Client Information:**

**CYPRESS HEMP LLC**  
10771 Perkins Rd  
Suite A  
BATON ROUGE, LA 70810

Batch # 1535  
Batch Date: 2026-03-16  
Extracted From: Hemp  
Test Reg State: Louisiana

Order # CYP260417-010001  
Order Date: 2026-04-17  
Sample # AAHP999  
Sampling Date: 2026-04-27  
Lab Batch Date: 2026-04-27  
Completion Date: 2026-04-29  
Initial Gross Weight: 132.200 g  
Net Weight: 98.200 g  
Number of Units: 1  
Net Weight per Package: 98200.000 mg  
Servicing Number: 15.00000

**Pesticides - LA**

Specimen Weight: 600.200 mg

**Passed**

SOP13.007 (LCMS/GCMS)

Dilution Factor: 2.500

Analyte	LOD (ppm)	LOQ (ppm)	Action Level (ppm)	Result (ppm)	Analyte	LOD (ppm)	LOQ (ppm)	Action Level (ppm)	Result (ppm)
Abamectin	4.3500E-4	0.009	0.3	<LOQ	Hexythiazox	4.5000E-5	0.0096	2	<LOQ
Acephate	4.6700E-4	0.0096	5	<LOQ	Imazail	6.3900E-4	0.0096	0	<LOQ
Acequinocyl	8.0100E-4	0.0096	4	<LOQ	Imidacloprid	1.5900E-4	0.0096	3	<LOQ
Acetamiprid	8.0000E-5	0.0096	5	<LOQ	Kresoxim Methyl	2.6800E-4	0.0096	1	<LOQ
Aldicarb	1.2400E-4	0.0096	0	<LOQ	Malathion	4.1000E-4	0.0096	5	<LOQ
Azoxystrobin	6.8300E-4	0.0096	40	<LOQ	Metaxalyl	7.4900E-4	0.0096	15	<LOQ
Bifenazate	8.2000E-5	0.0096	5	<LOQ	Methiocarb	9.9000E-5	0.0096	0	<LOQ
Bifenthrin	1.2100E-4	0.0096	0.5	<LOQ	Methomyl	1.2100E-4	0.0096	0.1	<LOQ
Boscalid	1.5300E-4	0.0096	10	<LOQ	methyl-Parathion	3.0650E-3	0.0096	0	<LOQ
Captan	8.9660E-3	0.048	5	<LOQ	Mevinphos	1.3700E-3	0.0096	0	<LOQ
Carbaryl	1.1800E-4	0.0096	0.5	<LOQ	Myclobutanil	5.7100E-4	0.0096	9	<LOQ
Carbofuran	1.7800E-4	0.0096	0	<LOQ	Naled	8.3000E-5	0.0096	0.5	<LOQ
Chlorantraniliprole	5.2000E-5	0.0096	40	<LOQ	Oxamyl	1.2300E-4	0.0096	0.2	<LOQ
Chlorfenapyr	3.1210E-3	0.0096	0.1	<LOQ	Paclobutrazol	1.2300E-4	0.0096	0	<LOQ
Chlorpyrifos	2.7100E-4	0.0096	0	<LOQ	Pentachloronitrobenzen (Quintozene)	5.1400E-3	0.0096	0.2	<LOQ
Clofentezine	1.1900E-4	0.0096	0.5	<LOQ	Permethrin	7.1800E-4	0.0096	20	<LOQ
Coumaphos	1.2900E-4	0.0096	0	<LOQ	Phosmet	3.0100E-4	0.0096	0.2	<LOQ
Cyfluthrin	7.7300E-3	0.048	1	<LOQ	Piperonylbutoxide	2.1700E-4	0.0096	8	<LOQ
Cypermethrin	8.8700E-4	0.0096	1	<LOQ	Prallethrin	1.3650E-3	0.0096	0.4	<LOQ
Daminozide	1.7970E-3	0.0096	0	<LOQ	Propiconazole	2.5900E-4	0.0096	20	<LOQ
Diazinon	1.3280E-3	0.0096	0.2	<LOQ	Propoxur	1.4700E-4	0.0096	0	<LOQ
Dichlorvos	4.6500E-4	0.0096	0	<LOQ	Pyrethrins	2.5600E-4	0.0014	1	<LOQ
Dimethoate	3.6600E-4	0.0096	0	<LOQ	Pyridaben	5.9000E-5	0.0096	3	<LOQ
Dimethomorph	2.7200E-4	0.0096	20	<LOQ	Spinetoram	3.4600E-4	0.0096	3	<LOQ
Ethoprophos	1.9200E-4	0.0096	0	<LOQ	Spinosad	2.8000E-5	0.00239	3	<LOQ
Etofenprox	1.1600E-4	0.0096	0	<LOQ	Spiromesifen	2.9100E-4	0.0096	12	<LOQ
Etoxadole	5.7000E-4	0.0096	1.5	<LOQ	Spirotetramat	1.4100E-4	0.0096	13	<LOQ
Fenhexamid	1.0110E-3	0.0096	10	<LOQ	Spiroxamine	1.1900E-4	0.0096	0	<LOQ
Fenoxycarb	1.6900E-4	0.0096	0	<LOQ	Tebuconazole	1.3400E-4	0.0096	2	<LOQ
Fenpyroximate	1.3900E-4	0.0096	2	<LOQ	Thiacloprid	3.9700E-4	0.0096	0	<LOQ
Fipronil	6.0500E-4	0.0096	0.1	<LOQ	Thiamethoxam	1.0400E-4	0.0096	4.5	<LOQ
Flonicamid	1.2800E-4	0.0096	2	<LOQ	Trifloxystrobin	8.8000E-5	0.0096	30	<LOQ
Fludioxonil	5.2100E-4	0.0096	30	<LOQ					

*Aixia Sun*  
Aixia Sun Lab Director/Principal Scientist  
D.H.Sc., M.Sc., B.Sc., MT (AAB)

Definitions are found on page 1

This report shall not be reproduced, without written approval, from ACS Laboratory. The results of this report relate only to the material or product analyzed. Test results are confidential unless explicitly waived otherwise. ACS Laboratory is accredited to the ISO/IEC 17025:2017 Standard.

