



Pacific Manufacturing & Design

14340 Carlson Cir J5, Tampa, FL 33626
(727) 768-4201

Batch 1470-210

Laboratory ID:	JJ14002-07	Sample Date:	10/14/25
Sample Matrix:	Gummy	Received:	10/14/25 10:12
Batch Unit Size:	6.208 g	Completed:	10/21/25 12:01
Description:	Sour Apple		

POTENCY SUMMARY (As Received)

<u>Total CBD</u>	<u>Total THC</u>	<u>Total Cannabinoids</u>
7.73% (480 mg)	0.265% (16.5 mg)	8.06% (500 mg)

Analyte	%	mg
CBD	7.73	480
delta 9-THC	0.265	16.5
CBDV	0.0548	3.40
THCV	0.00448	0.278
CBG	0.00265	0.165
CBC	<LOQ	<LOQ
CBDa	<LOQ	<LOQ
CBGa	<LOQ	<LOQ
CBN	<LOQ	<LOQ
delta 8-THC	<LOQ	<LOQ
THCa	<LOQ	<LOQ

TERPENES SUMMARY (Top Ten)

Terpenes
Not Tested

ANALYSIS SUMMARY

Potency	PASS	Homogeneity	Not Tested	Terpenes	Not Tested
Residual Solvents	Not Tested	% Moisture	Not Tested	Water Activity	Not Tested
Foreign Matter	Not Tested	Pesticides	Not Tested	Mycotoxins	Not Tested
Heavy Metals	Not Tested	Microbials	Not Tested		

Copyright © 2025 Modern Canna, LLC. All rights reserved.

This report shall not be reproduced, distributed, or transmitted in any form or by any means, without written consent from Modern Canna, LLC. The results in this report relate only to the products analyzed. The results in this report are confidential. For more information regarding our reporting limits, please visit: www.moderncanna.com/modern-canna-reporting-limits/

LOQ = Limit of Quantification ND = Non-Detect RPD = Relative Percent Difference MDL = Method Detection Limit PQL = Practical Quantitation Limit



Certificate of Analysis
Compliance Test

Client Information:

CYPRESS HEMP LLC
10771 Perkins Rd
Suite A
BATON ROUGE, LA 70810

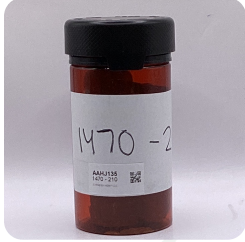
Batch # 1470 - 210
Batch Date: 2026-01-15
Extracted From: Hemp
Test Reg State: Louisiana

Order # CYP260128-130001
Order Date: 2026-01-28
Sample # AAHJ135

Sampling Date: 2026-01-30
Lab Batch Date: 2026-01-30
Completion Date: 2026-02-06

Initial Gross Weight: 131.400 g
Net Weight: 98.300 g

Number of Units: 1
Net Weight per Package: 98300.000 mg
Serving Number: 30.00000



Product Image

Heavy Metals Passed	Pesticides Passed	Residual Solvents Passed	Pathogenic Microbiology Passed	Microbiology Petrifilm Passed
-------------------------------	-----------------------------	------------------------------------	--	---

Microbiology TYM (Petrifilm/Plating) - LA
Specimen Weight: 1005.000 mg

Passed
SOP13.003 (Petrifilm)

Dilution Factor: 1.000

Analyte	LOQ (cfu/g)	Action Level (cfu/g)	Result (cfu/g)
Yeast/Mold	10000	10000	<10000

Pathogenic Microbiology - SE (MicroArray)
Specimen Weight: 1039.800 mg

Passed
SOP13.019 (Micro Array)

Dilution Factor: 1.000

Analyte	Result (cfu/g)	Analyte	Result (cfu/g)
Salmonella	Absence in 1g	STEC E. Coli	Absence in 1g

Axia Sun Lab Director/Principal Scientist
D.H.Sc., M.Sc., B.Sc., MT (AAB)



Definitions and Abbreviations used in this report: Total Active CBD = CBD + (CBD-A * 0.877), *Total CBDV = CBDV + (CBDVA * 0.867), Total Delta-9 THC = Delta-9 THC + THCA, Total Active THC = Total Delta-9 THC + Delta6a10a-THC + Delta-8 THC + Delta-10 THC + Delta-8 THC-O-Acetate + THC-O-Acetate + Delta-10 THC-O-Acetate, Total THCV = THCV + (THCVA * 0.877), CBG Total = (CBGA * 0.878) + CBG, CBN Total = (CBNA * 0.876) + CBN, Total CBC = CBC + (CBCA * 0.877), Total THC-O-Acetate = Delta 8 THC-O-Acetate + Delta 9 THC-O-Acetate, Total THCP = Delta8-THCP + Delta9-THCP, Total Cannabinoids = Total percentage of cannabinoids within the sample. (mg/ml) = Milligrams per Milliliter, LOQ = Limit of Quantitation, LOD = Limit of Detection, Dilution = Dilution Factor, (ppb) = Parts per Billion, (%) = Percent, (cfu/g) = Colony Forming Unit per Gram, (µg/g) = Microgram per Gram, (ppm) = Parts per Million, (µg/g), (aw) = Water Activity, (mg/Kg) = Milligram per Kilogram. ACS uses simple acceptance criteria. Passed - Analyte/microbe is not detected or is at the level below the action limit per LA rule R.S., 40:4(A)(13), R.S. 3:1483, R.S. 40:604. Failed - Analyte/microbe is at the level that equal or above the action limit per LA rule R.S., 40:4(A)(13), R.S. 3:1483, R.S. 40:604 The results apply to the sample as received.

This report shall not be reproduced, without written approval, from ACS Laboratory. The results of this report relate only to the material or product analyzed. Test results are confidential unless explicitly waived otherwise. ACS Laboratory is accredited to the ISO/IEC 17025:2017 Standard.



Certificate of Analysis
Compliance Test

Client Information:

CYPRESS HEMP LLC
10771 Perkins Rd
Suite A
BATON ROUGE, LA 70810

Batch # 1470 - 210
Batch Date: 2026-01-15
Extracted From: Hemp
Test Reg State: Louisiana

Order # CYP260128-130001 Sampling Date: 2026-01-30 Initial Gross Weight: 131.400 g Number of Units: 1
Order Date: 2026-01-28 Lab Batch Date: 2026-01-30 Net Weight: 98.300 g Net Weight per Package: 98300.000 mg
Sample # AAHJ135 Completion Date: 2026-02-06 Serving Number: 30.00000



Heavy Metals - LA

Specimen Weight: 248.600 mg

Passed
SOP13.048 (ICP-MS)

Dilution Factor: 201.126

Analyte	LOD (ppm)	LOQ (ppm)	Action Level (ppm)	Result (ppm)	Analyte	LOD (ppm)	LOQ (ppm)	Action Level (ppm)	Result (ppm)
Arsenic (As)	.00483	0.1	10	<LOQ	Lead (Pb)	0.0058	0.1	10	<LOQ
Cadmium (Cd)	.00064	0.1	4.1	<LOQ	Mercury (Hg)	.01176	0.1	2	<LOQ



Residual Solvents - LA (CBD)

Specimen Weight: 299.600 mg

Passed
SOP13.039 (GCMS-HS)

Dilution Factor: 1.000

Analyte	LOD (ppm)	LOQ (ppm)	Action Level (ppm)	Result (ppm)	Analyte	LOD (ppm)	LOQ (ppm)	Action Level (ppm)	Result (ppm)
1,1-Dichloroethene	0.009	0.16	8	<LOQ	Heptane	0.001	1.39	500	16.1
1,2-Dichloroethane	0.000	0.04	5	<LOQ	Hexane	0.068	1.17	10	<LOQ
Acetone	0.015	2.08	5000	<LOQ	Isopropyl alcohol	0.005	1.39	500	13.3
Acetonitrile	0.060	1.17	410	<LOQ	Methanol	0.001	0.69	3000	27.2
Benzene	0.000	0.02	1	<LOQ	Methylene chloride	0.003	2.43	600	<LOQ
Butanes	0.417	2.5	800	<LOQ	Pentane	0.037	2.08	5000	<LOQ
Chloroform	0.000	0.04	60	<LOQ	Propane	0.031	5.83	2100	<LOQ
Ethanol	0.002	2.78	5000	<LOQ	Toluene	0.001	2.92	1	<LOQ
Ethyl Acetate	0.001	1.11	5000	9.66	Total Xylenes	0.000	2.92	1	<LOQ
Ethyl Ether	0.005	1.39	5000	<LOQ	Trichloroethylene	0.001	0.49	80	<LOQ
Ethylene Oxide	0.004	0.1	5	<LOQ					

Aixia Sun

Aixia Sun Lab Director/Principal Scientist
D.H.Sc., M.Sc., B.Sc., MT (AAB)

Definitions are found on page 1

This report shall not be reproduced, without written approval, from ACS Laboratory. The results of this report relate only to the material or product analyzed. Test results are confidential unless explicitly waived otherwise. ACS Laboratory is accredited to the ISO/IEC 17025:2017 Standard.





Certificate of Analysis
Compliance Test

Client Information:

CYPRESS HEMP LLC
10771 Perkins Rd
Suite A
BATON ROUGE, LA 70810

Batch # 1470 - 210
Batch Date: 2026-01-15
Extracted From: Hemp
Test Reg State: Louisiana

Order # CYP260128-130001
Order Date: 2026-01-28
Sample # AAHJ135
Sampling Date: 2026-01-30
Lab Batch Date: 2026-01-30
Completion Date: 2026-02-06
Initial Gross Weight: 131.400 g
Net Weight: 98.300 g
Number of Units: 1
Net Weight per Package: 98300.000 mg
Serving Number: 30.00000

Pesticides - LA

Specimen Weight: 588.100 mg

Passed

SOP13.007 (LCMS/GCMS)

Dilution Factor: 2.550

Analyte	LOD (ppm)	LOQ (ppm)	Action Level (ppm)	Result (ppm)	Analyte	LOD (ppm)	LOQ (ppm)	Action Level (ppm)	Result (ppm)
Abamectin	4.3500E-4	0.009	0.3	<LOQ	Hexythiazox	4.5000E-5	0.0096	2	<LOQ
Acephate	4.6700E-4	0.0096	5	<LOQ	Imazail	6.3900E-4	0.0096	0	<LOQ
Acequinocyl	8.0100E-4	0.0096	4	<LOQ	Imidacloprid	1.5900E-4	0.0096	3	<LOQ
Acetamiprid	8.0000E-5	0.0096	5	<LOQ	Kresoxim Methyl	2.6800E-4	0.0096	1	<LOQ
Aldicarb	1.2400E-4	0.0096	0	<LOQ	Malathion	4.1000E-4	0.0096	5	<LOQ
Azoxystrobin	6.8300E-4	0.0096	40	<LOQ	Metaxalyl	7.4900E-4	0.0096	15	<LOQ
Bifenazate	8.2000E-5	0.0096	5	<LOQ	Methiocarb	9.9000E-5	0.0096	0	<LOQ
Bifenthrin	1.2100E-4	0.0096	0.5	<LOQ	Methomyl	1.2100E-4	0.0096	0.1	<LOQ
Boscalid	1.5300E-4	0.0096	10	<LOQ	methyl-Parathion	3.0650E-3	0.0096	0	<LOQ
Captan	8.9660E-3	0.048	5	<LOQ	Mevinphos	1.3700E-3	0.0096	0	<LOQ
Carbaryl	1.1800E-4	0.0096	0.5	<LOQ	Myclobutanil	5.7100E-4	0.0096	9	<LOQ
Carbofuran	1.7800E-4	0.0096	0	<LOQ	Naled	8.3000E-5	0.0096	0.5	<LOQ
Chlorantraniliprole	5.2000E-5	0.0096	40	<LOQ	Oxamyl	1.2300E-4	0.0096	0.2	<LOQ
Chlorfenapyr	3.1210E-3	0.0096	0.1	<LOQ	Paclobutrazol	1.2300E-4	0.0096	0	<LOQ
Chlorpyrifos	2.7100E-4	0.0096	0	<LOQ	Pentachloronitrobenzen (Quintozene)	5.1400E-3	0.0096	0.2	<LOQ
Clofentezine	1.1900E-4	0.0096	0.5	<LOQ	Permethrin	7.1800E-4	0.0096	20	<LOQ
Coumaphos	1.2900E-4	0.0096	0	<LOQ	Phosmet	3.0100E-4	0.0096	0.2	<LOQ
Cyfluthrin	7.7300E-3	0.048	1	<LOQ	Piperonylbutoxide	2.1700E-4	0.0096	8	<LOQ
Cypermethrin	8.8700E-4	0.0096	1	<LOQ	Prallethrin	1.3650E-3	0.0096	0.4	<LOQ
Daminozide	1.7970E-3	0.0096	0	<LOQ	Propiconazole	2.5900E-4	0.0096	20	<LOQ
Diazinon	1.3280E-3	0.0096	0.2	<LOQ	Propoxur	1.4700E-4	0.0096	0	<LOQ
Dichlorvos	4.6500E-4	0.0096	0	<LOQ	Pyrethrins	2.5600E-4	0.0014	1	<LOQ
Dimethoate	3.6600E-4	0.0096	0	<LOQ	Pyridaben	5.9000E-5	0.0096	3	<LOQ
Dimethomorph	2.7200E-4	0.0096	20	<LOQ	Spinetoram	3.4600E-4	0.0096	3	<LOQ
Ethoprophos	1.9200E-4	0.0096	0	<LOQ	Spinosad	2.8000E-5	0.00239	3	<LOQ
Etofenprox	1.1600E-4	0.0096	0	<LOQ	Spiromesifen	2.9100E-4	0.0096	12	<LOQ
Etoxazole	5.7000E-4	0.0096	1.5	<LOQ	Spirotetramat	1.4100E-4	0.0096	13	<LOQ
Fenhexamid	1.0110E-3	0.0096	10	<LOQ	Spiroxamine	1.1900E-4	0.0096	0	<LOQ
Fenoxycarb	1.6900E-4	0.0096	0	<LOQ	Tebuconazole	1.3400E-4	0.0096	2	<LOQ
Fenpyroximate	1.3900E-4	0.0096	2	<LOQ	Thiacloprid	3.9700E-4	0.0096	0	<LOQ
Fipronil	6.0500E-4	0.0096	0.1	<LOQ	Thiamethoxam	1.0400E-4	0.0096	4.5	<LOQ
Flonicamid	1.2800E-4	0.0096	2	<LOQ	Trifloxystrobin	8.8000E-5	0.0096	30	<LOQ
Fludioxonil	5.2100E-4	0.0096	30	<LOQ					

Aixia Sun
Aixia Sun Lab Director/Principal Scientist
D.H.Sc., M.Sc., B.Sc., MT (AAB)

Definitions are found on page 1

This report shall not be reproduced, without written approval, from ACS Laboratory. The results of this report relate only to the material or product analyzed. Test results are confidential unless explicitly waived otherwise. ACS Laboratory is accredited to the ISO/IEC 17025:2017 Standard.

