



Certificate of Analysis Compliance Test

Client Information:

Cypress Hemp LLC
10771 Perkins Rd
Suite A
Baton Rouge, LA 70810
License #

Batch Data:

Batch # #224
Batch Date: 2026-03-01
Extracted From: Hemp

Order Details:

Test Reg State: National

Food Permits:

Order #

SUN260304-030001
Order Date: 2026-03-04
Sample # AAHM667

Sampling Date: 2026-03-06
Lab Batch Date: 2026-03-06
Completion Date: 2026-03-17

Initial Gross Weight: 45.900 g
Net Weight: 40.000 g

Net Weight per Package:
40000.000 mg

Net Weight per Serving:
10000 mg
Servings Per Package:
4



Product Image



Potency
Passed



HHCP
Passed



Potency Summary

Total HHC	<LOQ	Delta 9 THC	0.282%
per Serving	0.00 mg	per Serving	28.2 mg
per Package	0.00 mg	per Package	113 mg
Total Active CBD	7.06%	Total CBG	0.00400%
per Serving	706 mg	per Serving	0.400 mg
per Package	2820 mg	per Package	1.60 mg
Total CBN	0.00500%	Total Cannabinoids	7.41%
per Serving	0.500 mg	per Serving	741 mg
per Package	2.00 mg	per Package	2960 mg
Total Active THC (LA)	0.282%	Total Active THC	0.282%
per Serving	28.2 mg	per Serving	28.2 mg
per Package	113 mg	per Package	113 mg

Aixia Sun
Aixia Sun Lab Director/Principal Scientist
D.H.Sc., M.Sc., B.Sc., MT (AAB)



Definitions and Abbreviations used in this report: Definitions and Abbreviations used in this report: Total CBD = CBD + (CBD-A * 0.877), Total CBDV = CBDV + (CBDVA * 0.867), Total THC = (THCA-A * 0.877) + Delta 9 THC, Total THCV = THCV + (THCVA * 0.87), CBG Total = (CBGA * 0.878) + CBG, CBN Total = (CBNA * 0.876) + CBN, Total CBC = CBC + (CBCA * 0.877), Total Cannabinoids = Total percentage of cannabinoids within the sample. (mg/ml) = Milligrams per Milliliter, LOQ = Limit of Quantitation, LOD = Limit of Detection, Dilution = Dilution Factor(ppb) = Parts per Billion, (%) = Percent, (cfu/g) = Colony Forming Unit per Gram(cfu/g) = Colony Forming Unit per Gram, LOD = Limit of Detection, (µg/g) = Microgram per Gram(ppm) = Parts per Million, (ppm) = (µg/g), (aw) = Water Activity, (mg/Kg) = Milligram per Kilogram Pesticides indicators: 1=FL LOD/LOQ/AL; 2= CO LOD/LOQ/AL; 3 = CO LOD/ACS CO LOQ

This report shall not be reproduced, without written approval, from ACS Laboratory. The results of this report relate only to the material or product analyzed. Test results are confidential unless explicitly waived otherwise. ACS Laboratory is accredited to the ISO/IEC 17025:2017 Standard. This facility meets the human health and food safety sanitation requirements of the Kentucky Cabinet for Health and Family Services as documented by KYCHFS.



Certificate of Analysis

Compliance Test

Client Information:

Cypress Hemp LLC
10771 Perkins Rd
Suite A
Baton Rouge, LA 70810
License #

Batch Data:

Batch # #224
Batch Date: 2026-03-01
Extracted From: Hemp

Order Details:

Test Reg State: National

Food Permits:

Order #

SUN260304-030001
Order Date: 2026-03-04
Sample # AAHM667

Sampling Date: 2026-03-06

Lab Batch Date: 2026-03-06
Completion Date: 2026-03-17

Initial Gross Weight: 45.900 g

Net Weight: 40.000 g

Net Weight per Package:

40000.000 mg

Net Weight per Serving:

10000 mg
Servings Per Package:
4



National Panel Potency
Specimen Weight: 1533.800 mg

Passed

SOP13.001,SOP13.050
(LCUV,LCMS)

Pieces For Panel: 4

Analyte	Dilution (1:n)	LOD (mg/g)	LOQ (%)	Result (mg/g)	(%)	Per Serving (mg)	Per Package (mg)
CBD	10.000	.0000421	0.002	70.6	7.06	706	2820
Delta-9 THC	10.000	.0000571	0.002	2.82	0.282	28.2	113
CBDV	10.000	.0000614	0.002	0.400	0.0400	4.00	16.0
CBC	10.000	.0000514	0.002	0.171	0.0171	1.71	6.84
CBGM	1.000	.000116	0.002	0.0500	0.00500	0.500	2.00
CBN	10.000	.0000597	0.002	0.0500	0.00500	0.500	2.00
CBG	10.000	.0000507	0.002	0.0400	0.00400	0.400	1.60
THCV	10.000	.0000276	0.002	0.0300	0.00300	0.300	1.20
(6aR,9R) Delta-10 THC	1.000	0.0015	0.002	<LOQ	<LOQ	0.00	0.00
(6aR,9S) Delta-10 THC	1.000	0.0015	0.002	<LOQ	<LOQ	0.00	0.00
Abnormal CBD	10.000	0.015	0.002	<LOQ	<LOQ	0.00	0.00
CBCA	10.000	0.000107	0.002	<LOQ	<LOQ	0.00	0.00
CBCV	1.000	.0000307	0.002	<LOQ	<LOQ	0.00	0.00
CBDA	10.000	.0000143	0.002	<LOQ	<LOQ	0.00	0.00
CBDVA	10.000	0.000014	0.002	<LOQ	<LOQ	0.00	0.00
CBE	1.000	.0000483	0.002	<LOQ	<LOQ	0.00	0.00
CBGA	10.000	.0000847	0.002	<LOQ	<LOQ	0.00	0.00
CBGV	1.000	.0000287	0.002	<LOQ	<LOQ	0.00	0.00
CBL	10.000	.0000919	0.002	<LOQ	<LOQ	0.00	0.00
CBLA	10.000	0.015	0.001	<LOQ	<LOQ	0.00	0.00
CBNA	10.000	0.000014	0.002	<LOQ	<LOQ	0.00	0.00
CBT	1.000	0.000325	0.004	<LOQ	<LOQ	0.00	0.00
CBV	1.000	.0000670	0.002	<LOQ	<LOQ	0.00	0.00
Delta-10 THC	10.000	0.0015	0.002	<LOQ	<LOQ	0.00	0.00
Delta-8 THC	10.000	.0000808	0.002	<LOQ	<LOQ	0.00	0.00
Delta-8 THC-O Acetate	10.000	0.000027	0.002	<LOQ	<LOQ	0.00	0.00
Delta-8 THCV	10.000	0.0015	0.002	<LOQ	<LOQ	0.00	0.00
Delta-9 THC-O Acetate	10.000	0.003	0.002	<LOQ	<LOQ	0.00	0.00
Delta6a10a-THC	1.000	0.0015	0.001	<LOQ	<LOQ	0.00	0.00
Delta8-THCA-A	10.000	0.015	0.001	<LOQ	<LOQ	0.00	0.00
Delta8-THCP	10.000	0.0015	0.002	<LOQ	<LOQ	0.00	0.00
Delta9-THCP	10.000	0.0012	0.002	<LOQ	<LOQ	0.00	0.00
Exo-THC	10.000	0.000054	0.002	<LOQ	<LOQ	0.00	0.00
THCA-A	10.000	0.000938	0.004	<LOQ	<LOQ	0.00	0.00
THCB	10.000	0.00195	0.002	<LOQ	<LOQ	0.00	0.00
THCH	10.000	0.00195	0.002	<LOQ	<LOQ	0.00	0.00
	10.000	0.015	0.002	<LOQ	<LOQ	0.00	0.00
	10.000			2.82	0.282	0.00	0.00
	10.000			70.6	7.06	0.00	0.00

Aixia Sun, Lab Director/Principal Scientist
D.H.Sc., M.Sc., B.S.C., M.T. (AAB)

Definitions are found on page 1

This report shall not be reproduced, without written approval, from ACS Laboratory. The results of this report relate only to the material or product analyzed. Test results are confidential unless explicitly waived otherwise. ACS Laboratory is accredited to the ISO/IEC 17025:2017 Standard. This facility meets the human health and food safety sanitation requirements of the Kentucky Cabinet for Health and Family Services as documented by KYCHFS.





Certificate of Analysis Compliance Test

Client Information:

Cypress Hemp LLC
10771 Perkins Rd
Suite A
Baton Rouge, LA 70810
License #

Batch Data:

Batch # #224
Batch Date: 2026-03-01
Extracted From: Hemp

Order Details:

Test Reg State: National

Food Permits:

Order #

SUN260304-030001
Order Date: 2026-03-04
Sample # AAHM667

Sampling Date: 2026-03-06

Lab Batch Date: 2026-03-06
Completion Date: 2026-03-17

Initial Gross Weight: 45.900 g

Net Weight: 40.000 g

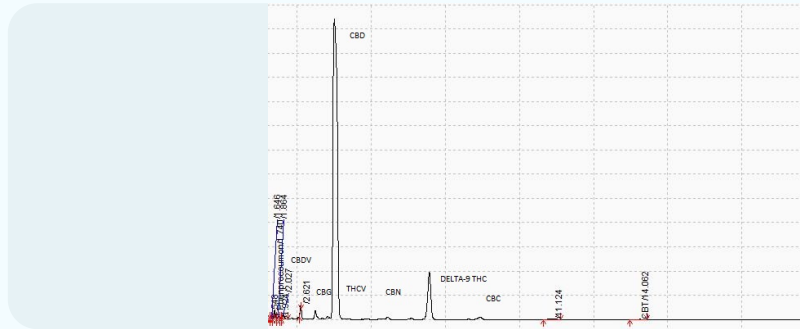
Net Weight per Package:

40000.000 mg

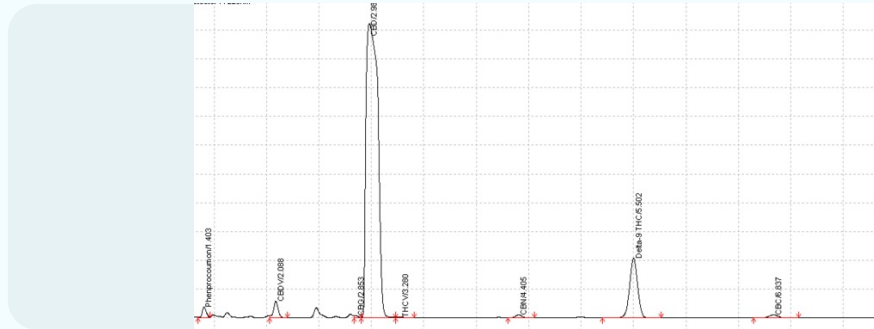
Net Weight per Serving:

10000 mg
Servings Per Package:
4

National Panel Potency



National Panel Potency



Aixia Sun
Aixia Sun Lab Director/Principal Scientist
D.H.Sc., M.Sc., B.Sc., MT (AAB)

Definitions are found on page 1

This report shall not be reproduced, without written approval, from ACS Laboratory. The results of this report relate only to the material or product analyzed. Test results are confidential unless explicitly waived otherwise. ACS Laboratory is accredited to the ISO/IEC 17025:2017 Standard. This facility meets the human health and food safety sanitation requirements of the Kentucky Cabinet for Health and Family Services as documented by KYCHFS.





Certificate of Analysis
Compliance Test

Client Information: Cypress Hemp LLC 10771 Perkins Rd Suite A Baton Rouge, LA 70810 License #	Batch Data: Batch # #224 Batch Date: 2026-03-01 Extracted From: Hemp	Order Details: Test Reg State: National	Food Permits:
---	--	---	----------------------

Order # SUN260304-030001 Order Date: 2026-03-04 Sample # AAHM667	Sampling Date: 2026-03-06 Lab Batch Date: 2026-03-06 Completion Date: 2026-03-17	Initial Gross Weight: 45.900 g Net Weight: 40.000 g	Net Weight per Package: 40000.000 mg	Net Weight per Serving: 10000 mg Servings Per Package: 4
--	---	--	--	---

HHCP		HHCP				Passed			
Specimen Weight: 1533.800 mg		Dilution Factor: 10000.000				SOP13.001,SOP13.050 (LCUV,LCMS)			
Analyte	LOD (%)	LOQ (%)	Result (mg/g)	(%)	Analyte	LOD (%)	LOQ (%)	Result (mg/g)	(%)
(9R)-HHC	0.000	0.075	<LOQ	<LOQ	9(S)-HHCP	0.000	0.075	<LOQ	<LOQ
(9S)-HHC	0.000	0.075	<LOQ	<LOQ	Delta-8 THC methyl ether	0.000	0.075	<LOQ	<LOQ
(±)-9β-hydroxy-HHC	0.000	0.075	<LOQ	<LOQ	Delta-9 THC methyl ether	0.000	0.075	<LOQ	<LOQ
1(R)-H4-CBD	0.000	0.15	<LOQ	<LOQ	H2-CBD	0.000	0.075	<LOQ	<LOQ
1(S)-H4-CBD	0.000	0.15	<LOQ	<LOQ	Total HHC		0.075	<LOQ	<LOQ
9(R)-HHCP	0.000	0.075	<LOQ	<LOQ					

Aixia Sun
Aixia Sun Lab Director/Principal Scientist
D.H.Sc., M.Sc., B.Sc., MT (AAB)



Definitions are found on page 1
This report shall not be reproduced, without written approval, from ACS Laboratory. The results of this report relate only to the material or product analyzed. Test results are confidential unless explicitly waived otherwise. ACS Laboratory is accredited to the ISO/IEC 17025:2017 Standard. This facility meets the human health and food safety sanitation requirements of the Kentucky Cabinet for Health and Family Services as documented by KYCHFS.



Certificate of Analysis
Compliance Test

Client Information: Cypress Hemp LLC 10771 Perkins Rd Suite A Baton Rouge, LA 70810 License #	Batch Data: Batch # #224 Batch Date: 2026-03-01 Extracted From: Hemp	Order Details: Test Reg State: National	Food Permits:
---	--	---	----------------------

Order # SUN260304-030001 Order Date: 2026-03-04 Sample # AAHM667	Sampling Date: 2026-03-06 Lab Batch Date: 2026-03-06 Completion Date: 2026-03-17	Initial Gross Weight: 45.900 g Net Weight: 40.000 g	Net Weight per Package: 40000.000 mg	Net Weight per Serving: 10000 mg Servings Per Package: 4
--	---	--	--	---

HHCP at Dry Weight					Passed				
Specimen Weight: 1533.800 mg					SOP13.001,SOP13.050 (LCUV,LCMS)				
Analyte	LOD (%)	LOQ (%)	Result (mg/g)	(%)	Analyte	LOD (%)	LOQ (%)	Result (mg/g)	(%)
(9R)-HHC	0.000	0.075	<LOQ	<LOQ	9(S)-HHCP	0.000	0.075	<LOQ	<LOQ
(9S)-HHC	0.000	0.075	<LOQ	<LOQ	Delta-8 THC methyl ether	0.000	0.075	<LOQ	<LOQ
(±)-9β-hydroxy-HHC	0.000	0.075	<LOQ	<LOQ	Delta-9 THC methyl ether	0.000	0.075	<LOQ	<LOQ
1(R)-H4-CBD	0.000	0.15	<LOQ	<LOQ	H2-CBD	0.000	0.075	<LOQ	<LOQ
1(S)-H4-CBD	0.000	0.15	<LOQ	<LOQ	Total HHC		0.075	<LOQ	<LOQ
9(R)-HHCP	0.000	0.075	<LOQ	<LOQ					

Aixia Sun
Aixia Sun Lab Director/Principal Scientist
D.H.Sc., M.Sc., B.Sc., MT (AAB)

Definitions are found on page 1

This report shall not be reproduced, without written approval, from ACS Laboratory. The results of this report relate only to the material or product analyzed. Test results are confidential unless explicitly waived otherwise. ACS Laboratory is accredited to the ISO/IEC 17025:2017 Standard. This facility meets the human health and food safety sanitation requirements of the Kentucky Cabinet for Health and Family Services as documented by KYCHFS.

