



Certificate of Analysis

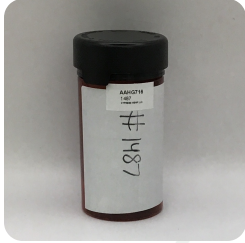
Compliance Test

Client Information:

CYPRESS HEMP LLC
10771 Perkins Rd
Suite A
BATON ROUGE, LA 70810
Order # CYP251211-130001
Order Date: 2025-12-11
Sample # AAHG716

Batch # 1487
Batch Date: 2025-12-11
Extracted From: Hemp
Test Reg State: Oregon

Sampling Date: 2025-12-17
Lab Batch Date: 2025-12-17
Completion Date: 2025-12-28
Initial Gross Weight: 90.000 g
Net Weight: 56.500 g
Number of Units: 1
Net Weight per Unit: 5650.000 mg



Product Image



**Potency
Tested**

Potency 10
Specimen Weight: 1531.100 mg

Tested
SOP13.001 (LCUV)

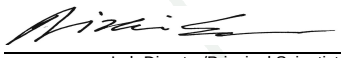


Potency Summary

Total Active THC 0.274% 15.481 mg	Total Active CBD 8.370% 472.905 mg
Total CBG 0.026% 1.469 mg	Total CBN - None Detected
Total Cannabinoids 8.702% 491.663 mg	

Pieces For Panel: 10

Analyte	LOD (mg/g)	LOQ (%)	Result (mg/g)	(%)
CBD	5.40E-5	0.015	83.700	8.370
Delta-9 THC	1.30E-5	0.015	2.740	0.274
CBDV	6.50E-5	0.015	0.320	0.032
CBG	2.48E-4	0.015	0.260	0.026
CBC	1.80E-5	0.015	<LOQ	<LOQ
CBDA	1.00E-5	0.015	<LOQ	<LOQ
CBGA	8.00E-5	0.015	<LOQ	<LOQ
CBN	1.40E-5	0.015	<LOQ	<LOQ
THCA-A	3.20E-5	0.015	<LOQ	<LOQ
THCV	7.00E-6	0.015	<LOQ	<LOQ
Total Active CBD			83.700	8.37
Total Active THC			2.7400	0.274


Aixia Sun Lab Director/Principal Scientist
D.H.Sc., M.Sc., B.Sc., MT (AAB)



Definitions and Abbreviations used in this report: Total Active CBD = CBD + (CBD-A * 0.877), *Total CBDV = CBDV + (CBDVA * 0.867), Total Active THC = THCA-A * 0.877 + Delta 9 THC, Total THC = THC + (THCVA * 0.87), CBG Total = (CBGA * 0.878) + CBG, CBN Total = (CBNA * 0.876) + CBN, Total CBC = CBC + (CBCA * 0.877), Total THC-O-Acetate = Delta 8 THC-O-Acetate + Delta 9 THC-O-Acetate, Total THCP = Delta8-THCP + Delta9-THCP, Total Cannabinoids = Total percentage of cannabinoids within the sample. (mg/ml) = Milligrams per Milliliter, LOQ = Limit of Quantitation, LOD = Limit of Detection, Dilution = Dilution Factor, (ppb) = Parts per Billion, (%) = Percent, (cfu/g) = Colony Forming Unit per Gram, (µg/g) = Microgram per Gram, (ppm) = Parts per Million, (ppm) = (µg/g), (aw) = Water Activity, (mg/Kg) = Milligram per Kilogram. ACS uses simple acceptance criteria. Passed - Analyte/microbe is not detected or is at the level below the action limit per OR rule OAR 333-007-0390, OAR 333-007-0400. Failed - Analyte/microbe is at the level that equal or above the action limit per OR rule OAR 333-007-0390, OAR 333-007-0400 The results apply to the sample as received.

This report shall not be reproduced, without written approval, from ACS Laboratory. The results of this report relate only to the material or product analyzed. Test results are confidential unless explicitly waived otherwise. ACS Laboratory is accredited to the ISO/IEC 17025:2017 Standard.