



Certificate of Analysis

Compliance Test

Client Information:

CYPRESS HEMP LLC
10771 Perkins Rd
Suite A
BATON ROUGE, LA 70810

Batch # 1511
Batch Date: 2025-12-11
Extracted From: Hemp

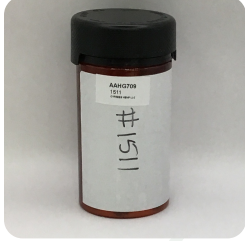
Test Reg State: Oregon

Order # CYP251211-130001
Order Date: 2025-12-11
Sample # AAHG709

Sampling Date: 2025-12-17
Lab Batch Date: 2025-12-17
Completion Date: 2025-12-29

Initial Gross Weight: 94.900 g
Net Weight: 62.000 g

Number of Units: 1
Net Weight per Unit: 4133.333 mg



Product Image



**Potency
Tested**



Potency 10

Specimen Weight: 1529.700 mg

Tested

SOP13.001 (LCUV)

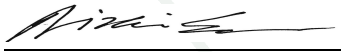


Potency Summary

Total Active THC 0.257% 10.623 mg	Total Active CBD 7.402% 305.949 mg
Total CBG - None Detected	Total CBN - None Detected
Total Cannabinoids 7.684% 317.605 mg	

Pieces For Panel: 15

Analyte	LOD (mg/g)	LOQ (%)	Result (mg/g)	(%)
CBD	5.40E-5	0.015	74.020	7.402
Delta-9 THC	1.30E-5	0.015	2.570	0.257
CBDV	6.50E-5	0.015	0.250	0.025
CBC	1.80E-5	0.015	<LOQ	<LOQ
CBDA	1.00E-5	0.015	<LOQ	<LOQ
CBG	2.48E-4	0.015	<LOQ	<LOQ
CBGA	8.00E-5	0.015	<LOQ	<LOQ
CBN	1.40E-5	0.015	<LOQ	<LOQ
THCA-A	3.20E-5	0.015	<LOQ	<LOQ
THCV	7.00E-6	0.015	<LOQ	<LOQ
Total Active CBD			74.020	7.402
Total Active THC			2.5700	0.257


Aixa Sun Lab Director/Principal Scientist
D.H.Sc., M.Sc., B.Sc., MT (AAB)



Definitions and Abbreviations used in this report: Total Active CBD = CBD + (CBD-A * 0.877), *Total CBDV = CBDV + (CBDVA * 0.867), Total Active THC = THCA-A * 0.877 + Delta 9 THC, Total THCV = THCV + (THCVA * 0.87), CBG Total = (CBGA * 0.878) + CBG, CBN Total = (CBNA * 0.876) + CBN, Total CBC = CBC + (CBCA * 0.877), Total THC-O-Acetate = Delta 8 THC-O-Acetate + Delta 9 THC-O-Acetate, Total THCP = Delta8-THCP + Delta9-THCP, Total Cannabinoids = Total percentage of cannabinoids within the sample. (mg/ml) = Milligrams per Milliliter, LOQ = Limit of Quantitation, LOD = Limit of Detection, Dilution = Dilution Factor, (ppb) = Parts per Billion, (%) = Percent, (cfu/g) = Colony Forming Unit per Gram, (µg/g) = Microgram per Gram, (ppm) = Parts per Million, (ppm) = (µg/g), (aw) = Water Activity, (mg/Kg) = Milligram per Kilogram. ACS uses simple acceptance criteria. Passed - Analyte/microbe is not detected or is at the level below the action limit per OR rule OAR 333-007-0390, OAR 333-007-0400. Failed - Analyte/microbe is at the level that equal or above the action limit per OR rule OAR 333-007-0390, OAR 333-007-0400 The results apply to the sample as received.

This report shall not be reproduced, without written approval, from ACS Laboratory. The results of this report relate only to the material or product analyzed. Test results are confidential unless explicitly waived otherwise. ACS Laboratory is accredited to the ISO/IEC 17025:2017 Standard.