



Certificate of Analysis Compliance Test

Client Information:

Cypress Hemp LLC
10771 Perkins Rd
Suite A
Baton Rouge, LA 70810

Batch Data:

Batch # #214
Batch Date: 2026-03-17
Extracted From: Hemp

Order Details:

Test Reg State: National

Food Permits:

Order #

SUN260326-030001
Order Date: 2026-03-26
Sample # AAH0411

Sampling Date: 2026-03-31

Lab Batch Date: 2026-03-31
Orig. Completion Date: 2026-04-09

Initial Gross Weight: 76.000 g

Net Weight: 73.600 g

Net Weight per Package:

75000.000 mg

Net Weight per Serving:

7500 mg
Servings Per Package:
10

Statement of Amendment: Updated Net Weight



Product Image

**Potency
Passed**

Potency Summary

Delta 9 THC	0.235%	Total Active CBD	6.30%
per Serving	17.6 mg	per Serving	473 mg
per Package	176 mg	per Package	4730 mg
Total CBG	0.00300%	Total CBN	0.00400%
per Serving	0.225 mg	per Serving	0.300 mg
per Package	2.25 mg	per Package	3.00 mg
Total Cannabinoids	6.59%	Total Active THC (LA)	0.235%
per Serving	494 mg	per Serving	17.6 mg
per Package	4940 mg	per Package	176 mg
Total Active THC	0.235%		
per Serving	17.6 mg		
per Package	176 mg		

Aixia Sun Lab Director/Principal Scientist
D.H.Sc., M.Sc., B.Sc., MT (AAB)

Definitions and Abbreviations used in this report: Total CBD = CBD + (CBD-A * 0.877), Total CBDV = CBDV + (CBDVA * 0.867), Total THC = (THCA-A * 0.877) + Delta 9 THC, Total THCV = THCV + (THCVA * 0.87), CBG Total = (CBGA * 0.878) + CBG, CBN Total = (CBNA * 0.876) + CBN, Total CBC = CBC + (CBCA * 0.877), Total Cannabinoids = Total percentage of cannabinoids within the sample. (mg/ml) = Milligrams per Milliliter, LOQ = Limit of Quantitation, LOD = Limit of Detection, Dilution = Dilution Factor(ppb) = Parts per Billion, (%) = Percent, (cfu/g) = Colony Forming Unit per Gram, (cfu/g) = Colony Forming Unit per Gram, LOD = Limit of Detection, (µg/g) = Microgram per Gram(ppm) = Parts per Million, (ppm) = (µg/g), (aw) = Water Activity, (mg/Kg) = Milligram per Kilogram Pesticides indicators: 1=FL LOD/LOQ/AL; 2= CO LOD/LOQ/AL; 3 = CO LOD/ACS CO LOQ, * Measurement of Uncertainty for all test panels ≤15% Revised report- see statement of amendment above.

This report shall not be reproduced, without written approval, from ACS Laboratory. The results of this report relate only to the material or product analyzed. Test results are confidential unless explicitly waived otherwise. ACS Laboratory is accredited to the ISO/IEC 17025:2017 Standard. This facility meets the human health and food safety sanitation requirements of the Kentucky Cabinet for Health and Family Services as documented by KYCHFS.





Certificate of Analysis

Compliance Test

Client Information:

Cypress Hemp LLC
10771 Perkins Rd
Suite A
Baton Rouge, LA 70810

Batch Data:

Batch # #214
Batch Date: 2026-03-17
Extracted From: Hemp

Order Details:

Test Reg State: National

Food Permits:

Order #

SUN260326-030001
Order Date: 2026-03-26
Sample # AAHO411

Sampling Date: 2026-03-31

Lab Batch Date: 2026-03-31
Orig. Completion Date: 2026-04-09

Initial Gross Weight: 76.000 g

Net Weight: 73.600 g

Net Weight per Package:

75000.000 mg

Net Weight per Serving:

7500 mg
Servings Per Package:
10



National Panel Potency
Specimen Weight: 1507.800 mg

Passed

SOP13.001 (LCUV)

Pieces For Panel: 10

Analyte	Dilution (1:n)	LOD (mg/g)	LOQ (%)	Result (mg/g)	(%)	Per Serving (mg)	Per Package (mg)
CBD	10.000	.0000421	0.002	63.0	6.30	473	4730
Delta-9 THC	10.000	.0000571	0.002	2.35	0.235	17.6	176
CBDV	10.000	.0000614	0.002	0.270	0.0270	2.03	20.3
CBC	10.000	.0000514	0.002	0.0690	0.00690	0.518	5.18
CBN	10.000	.0000597	0.002	0.0400	0.00400	0.300	3.00
CBG	10.000	.0000507	0.002	0.0300	0.00300	0.225	2.25
CBGM	1.000	.000116	0.002	0.0300	0.00300	0.225	2.25
THCV	10.000	.0000276	0.002	0.0300	0.00300	0.225	2.25
Abnormal CBD	10.000	0.015	0.002	<LOQ	<LOQ	0.00	0.00
CBCA	10.000	0.000107	0.002	<LOQ	<LOQ	0.00	0.00
CBCV	1.000	.0000307	0.002	<LOQ	<LOQ	0.00	0.00
CBDA	10.000	.0000143	0.002	<LOQ	<LOQ	0.00	0.00
CBDVA	10.000	0.000014	0.002	<LOQ	<LOQ	0.00	0.00
CBE	1.000	.0000483	0.002	<LOQ	<LOQ	0.00	0.00
CBGA	10.000	.0000847	0.002	<LOQ	<LOQ	0.00	0.00
CBGV	1.000	.0000287	0.002	<LOQ	<LOQ	0.00	0.00
CBL	1.000	.0000919	0.002	<LOQ	<LOQ	0.00	0.00
CBLA	10.000	0.015	0.001	<LOQ	<LOQ	0.00	0.00
CBNA	10.000	0.000014	0.002	<LOQ	<LOQ	0.00	0.00
CBT	1.000	0.000325	0.004	<LOQ	<LOQ	0.00	0.00
CBV	1.000	.0000670	0.002	<LOQ	<LOQ	0.00	0.00
Delta-10 THC	10.000	0.0015	0.002	<LOQ	<LOQ	0.00	0.00
Delta-8 THC	10.000	.0000808	0.002	<LOQ	<LOQ	0.00	0.00
Delta-8 THC-O Acetate	10.000	0.000027	0.002	<LOQ	<LOQ	0.00	0.00
Delta-8 THCV	10.000	0.0015	0.002	<LOQ	<LOQ	0.00	0.00
Delta-9 THC-O Acetate	10.000	0.003	0.002	<LOQ	<LOQ	0.00	0.00
Delta6a10a-THC	1.000	0.0015	0.001	<LOQ	<LOQ	0.00	0.00
Delta8-THCA-A	10.000	0.015	0.001	<LOQ	<LOQ	0.00	0.00
Delta8-THCP	10.000	0.0015	0.002	<LOQ	<LOQ	0.00	0.00
Delta9-THCP	10.000	0.0012	0.002	<LOQ	<LOQ	0.00	0.00
Exo-THC	10.000	0.000054	0.002	<LOQ	<LOQ	0.00	0.00
THCA-A	10.000	0.000938	0.004	<LOQ	<LOQ	0.00	0.00
THCB	10.000	0.00195	0.002	<LOQ	<LOQ	0.00	0.00
THCH	10.000	0.00195	0.002	<LOQ	<LOQ	0.00	0.00
Unknown Area	10.000	0.015	0.002	<LOQ	<LOQ	0.00	0.00
Total Active THC:	10.000			2.35	0.235	0.00	0.00
	10.000			63.0	6.30	0.00	0.00

Aixia Sun
Aixia Sun Lab Director/Principal Scientist
D.H.Sc., M.Sc., B.Sc., MT (AAB)

Definitions are found on page 1

This report shall not be reproduced, without written approval, from ACS Laboratory. The results of this report relate only to the material or product analyzed. Test results are confidential unless explicitly waived otherwise. ACS Laboratory is accredited to the ISO/IEC 17025:2017 Standard. This facility meets the human health and food safety sanitation requirements of the Kentucky Cabinet for Health and Family Services as documented by KYCHFS.





Certificate of Analysis Compliance Test

Client Information:

Cypress Hemp LLC
10771 Perkins Rd
Suite A
Baton Rouge, LA 70810

Batch Data:

Batch # #214
Batch Date: 2026-03-17
Extracted From: Hemp

Order Details:

Test Reg State: National

Food Permits:

Order #

SUN260326-030001
Order Date: 2026-03-26
Sample # AAHO411

Sampling Date: 2026-03-31

Lab Batch Date: 2026-03-31
Orig. Completion Date: 2026-04-09

Initial Gross Weight: 76.000 g

Net Weight: 73.600 g

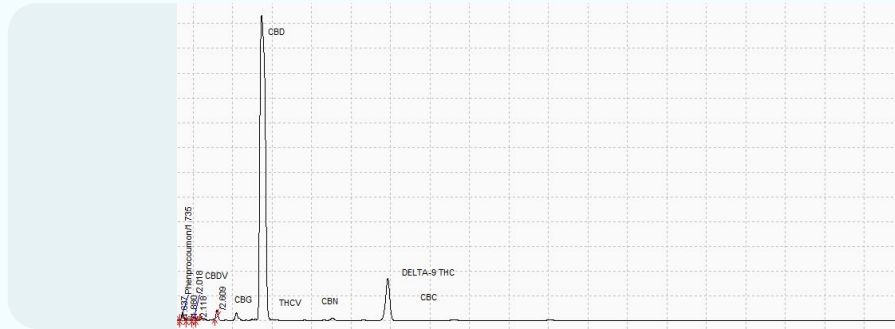
Net Weight per Package:

75000.000 mg

Net Weight per Serving:

7500 mg
Servings Per Package:
10

National Panel Potency



National Panel Potency

