



**Certificate of Analysis**  
Compliance Test

**Client Information:**  
**CYPRESS HEMP LLC**  
10771 Perkins Rd  
Suite A  
BATON ROUGE, LA 70810

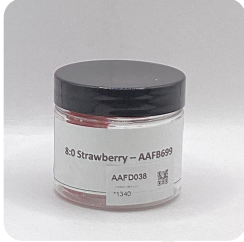
Batch # 1340  
Batch Date: 2023-11-27  
Extracted From: Hemp

Test Reg State: Louisiana

Order # CYP231214-100001  
Order Date: 2023-12-14  
Sample # AAFD038

Sampling Date: 2024-01-05  
Lab Batch Date: 2024-01-05  
Completion Date: 2024-01-08

Initial Gross Weight: 34.723 g  
Serving Number: 1.00000



Product Image

**H Heavy Metals Passed**   **Pesticides Passed**   **Residual Solvents Passed**   **Pathogenic Microbiology Passed**   **Microbiology Petrifilm Passed**

**Microbiology TYM (Petrifilm/Plating) - LA**  
Specimen Weight: 992.800 mg

Dilution Factor: 1.000

Analyte	LOQ (cfu/g)	Result (cfu/g)
Yeast/Mold	10000	<1000

**Passed**  
SOP13.003 (Petrifilm)

**Pathogenic Microbiology - SE (MicroArray)**

Specimen Weight: 1049.200 mg

Analyte	Result (cfu/g)	Analyte	Result (cfu/g)
Salmonella	Absence in 1g	STEC E. Coli	Absence in 1g

**Passed**  
SOP13.019 (Micro Array)

*Aixia Sun*  
Aixia Sun Lab Director/Principal Scientist  
D.H.Sc., M.Sc., B.Sc., MT (AAB)



Definitions and Abbreviations used in this report: Total Active CBD = CBD + (CBD-A \* 0.877), \*Total CBDV = CBDV + (CBDVA \* 0.877), Total Delta-9 THC = Delta-9 THC + THCA, Total Active THC = Total Delta-9 THC + Delta-6a10a-THC + Delta-8 THC + Delta-10 THC + Delta-8 THC-O-Acetate + THC-O-Acetate + Delta-10 THC-O-Acetate, Total THC = THCV + (THCVA \* 0.877), CBG Total = (CBGA \* 0.877) + CBG, CBN Total = (CBNA \* 0.877) + CBN, Total CBC = CBC + (CBCA \* 0.877), Total THC-O-Acetate = Delta 8 THC-O-Acetate + Delta 9 THC-O-Acetate, Total THCP = Delta8-THCP + Delta9-THCP, Other Cannabinoids Total = Total Cannabinoids - All the listed cannabinoids on the summary section, Total Detected Cannabinoids = Delta6a10a-THC + Delta8-THC + Total CBN + CBT + CBE + Delta8-THCV + Total CBG + Total CBD + Total THCV + CBL + Total THC + Total CBC + Total CBDV + Delta10-THC + Total THC-O-Acetate + Total THCP. (mg/ml) = Milligrams per Milliliter, LOQ = Limit of Quantitation, LOD = Limit of Detection, Dilution = Dilution Factor, (ppb) = Parts per Billion, (%) = Percent, (cfu/g) = Colony Forming Unit per Gram, (µg/g) = Microgram per Gram, (ppm) = Parts per Million, (ppm) = (µg/g), (aw) = Water Activity, (mg/Kg) = Milligram per Kilogram. ACS uses simple acceptance criteria. Passed - Analyte/microbe is not detected or is at the level below the action limit per LA rule R.S., 40:4(A)(13), R.S. 3:1483, R.S. 40:604. Failed - Analyte/microbe is at the level that equal or above the action limit per LA rule R.S., 40:4(A)(13), R.S. 3:1483, R.S. 40:604 Sample not received via laboratory sampling.

This report shall not be reproduced, without written approval, from ACS Laboratory. The results of this report relate only to the material or product analyzed. Test results are confidential unless explicitly waived otherwise. Accredited by a third-party accrediting body as a competent testing laboratory pursuant to ISO/IEC 17025 of the International Organization for Standardization.



**Certificate of Analysis**  
Compliance Test

**Client Information:**  
CYPRESS HEMP LLC  
10771 Perkins Rd  
Suite A  
BATON ROUGE, LA 70810

Batch # 1340  
Batch Date: 2023-11-27  
Extracted From: Hemp

Test Reg State: Louisiana

Order # CYP231214-100001  
Order Date: 2023-12-14  
Sample # AAFD038

Sampling Date: 2024-01-05  
Lab Batch Date: 2024-01-05  
Completion Date: 2024-01-08

Initial Gross Weight: 34.723 g  
Serving Number: 1.00000

**H Heavy Metals - LA**  
Specimen Weight: 254.600 mg

**Passed**  
SOP13.048 (ICP-MS)

Dilution Factor: 196.386

Analyte	LOD (ppm)	LOQ (ppm)	Action Level (ppm)	Result (ppm)	Analyte	LOD (ppm)	LOQ (ppm)	Action Level (ppm)	Result (ppm)
Arsenic (As)	.00483	0.1	10	<LOQ	Lead (Pb)	0.0058	0.1	10	<LOQ
Cadmium (Cd)	.00064	0.1	4.1	<LOQ	Mercury (Hg)	.01176	0.1	2	<LOQ

**Residual Solvents - LA (CBD)**  
Specimen Weight: 317.700 mg

**Passed**  
SOP13.039 (GCMS)

Dilution Factor: 1.000

Analyte	LOD (ppm)	LOQ (ppm)	Action Level (ppm)	Result (ppm)	Analyte	LOD (ppm)	LOQ (ppm)	Action Level (ppm)	Result (ppm)
1,1-Dichloroethene	0.0094	0.16	8	<LOQ	Heptane	0.0013	1.39	500	<LOQ
1,2-Dichloroethane	0.0003	0.04	5	<LOQ	Hexane	0.068	1.17	10	<LOQ
Acetone	0.015	2.08	5000	<LOQ	Isopropyl alcohol	0.0048	1.39	500	<LOQ
Acetonitrile	0.06	1.17	410	<LOQ	Methanol	0.0005	0.69	3000	15.298
Benzene	0.0002	0.02	1	<LOQ	Methylene chloride	0.0029	2.43	600	<LOQ
Butanes	0.4167	2.5	800	<LOQ	Pentane	0.037	2.08	5000	<LOQ
Chloroform	0.0001	0.04	60	<LOQ	Propane	0.031	5.83	2100	<LOQ
Ethanol	0.0021	2.78	5000	3187.891	Toluene	0.0009	2.92	1	<LOQ
Ethyl Acetate	0.0012	1.11	5000	<LOQ	Total Xylenes	0.0001	2.92	1	<LOQ
Ethyl Ether	0.0049	1.39	5000	<LOQ	Trichloroethylene	0.0014	0.49	80	<LOQ
Ethylene Oxide	0.0038	0.1	5	<LOQ					

Aixia Sun Lab Director/Principal Scientist  
D.H.Sc., M.Sc., B.Sc., MT (AAB)

Definitions are found on page 1

This report shall not be reproduced, without written approval, from ACS Laboratory. The results of this report relate only to the material or product analyzed. Test results are confidential unless explicitly waived otherwise. Accredited by a third-party accrediting body as a competent testing laboratory pursuant to ISO/IEC 17025 of the International Organization for Standardization.





**Certificate of Analysis**  
Compliance Test

**Client Information:**  
CYPRESS HEMP LLC  
10771 Perkins Rd  
Suite A  
BATON ROUGE, LA 70810

Batch # 1340  
Batch Date: 2023-11-27  
Extracted From: Hemp

Test Reg State: Louisiana

Order # CYP231214-100001  
Order Date: 2023-12-14  
Sample # AAFD038

Sampling Date: 2024-01-05  
Lab Batch Date: 2024-01-05  
Completion Date: 2024-01-08

Initial Gross Weight: 34.723 g  
Serving Number: 1.00000

**Pesticides - LA**  
Specimen Weight: 599.790 mg

**Passed**

SOP13.007 (LCMS/GCMS)

Dilution Factor: 2.500

Analyte	LOD (ppm)	LOQ (ppm)	Action Level (ppm)	Result (ppm)	Analyte	LOD (ppm)	LOQ (ppm)	Action Level (ppm)	Result (ppm)
Abamectin	4.3500E-4	0.009	0.3	<LOQ	Hexythiazox	4.5000E-5	0.0096	2	<LOQ
Acephate	4.6700E-4	0.0096	5	<LOQ	Imazalil	6.3900E-4	0.0096	0	<LOQ
Acequinocyl	8.0100E-4	0.0096	4	<LOQ	Imidacloprid	1.5900E-4	0.0096	3	<LOQ
Acetamiprid	8.0000E-5	0.0096	5	<LOQ	Kresoxim Methyl	2.6800E-4	0.0096	1	<LOQ
Aldicarb	1.2400E-4	0.0096	0	<LOQ	Malathion	4.1000E-4	0.0096	5	<LOQ
Azoxystrobin	6.8300E-4	0.0096	40	<LOQ	Metalaxyl	7.4900E-4	0.0096	15	<LOQ
Bifenazate	8.2000E-5	0.0096	5	<LOQ	Methiocarb	9.9000E-5	0.0096	0	<LOQ
Bifenthrin	1.2100E-4	0.0096	0.5	<LOQ	Methomyl	1.2100E-4	0.0096	0.1	<LOQ
Boscalid	1.5300E-4	0.0096	10	<LOQ	methyl-Parathion	3.0650E-3	0.0096	0	<LOQ
Captan	8.9660E-3	0.048	5	<LOQ	Mevinphos	1.3700E-3	0.0096	0	<LOQ
Carbaryl	1.1800E-4	0.0096	0.5	<LOQ	Myclobutanil	5.7100E-4	0.0096	9	<LOQ
Carbofuran	1.7800E-4	0.0096	0	<LOQ	Naled	8.3000E-5	0.0096	0.5	<LOQ
Chlorantraniliprole	5.2000E-5	0.0096	40	<LOQ	Oxamyl	1.2300E-4	0.0096	0.2	<LOQ
Chlorfenapyr	3.1210E-3	0.0096	0.1	<LOQ	Paclobotrazol	1.2300E-4	0.0096	0	<LOQ
Chlorpyrifos	2.7100E-4	0.0096	0	<LOQ	Pentachloronitrobenzen(Quintozene)	5.1400E-3	0.0096	0.2	<LOQ
Clofentezine	1.1900E-4	0.0096	0.5	<LOQ	Permethrin	7.1800E-4	0.0096	20	<LOQ
Coumaphos	1.2900E-4	0.0096	0	<LOQ	Phosmet	3.0100E-4	0.0096	0.2	<LOQ
Cyfluthrin	7.7300E-3	0.048	1	<LOQ	Piperonylbutoxide	2.1700E-4	0.0096	8	<LOQ
Cypermethrin	8.8700E-4	0.0096	1	<LOQ	Prallethrin	1.3650E-3	0.0096	0.4	<LOQ
Daminozide	1.7970E-3	0.0096	0	<LOQ	Propiconazole	2.5900E-4	0.0096	20	<LOQ
Diazinon	1.3280E-3	0.0096	0.2	<LOQ	Propoxur	1.4700E-4	0.0096	0	<LOQ
Dichlorvos	4.6500E-4	0.0096	0	<LOQ	Pyrethrins	2.5600E-4	0.0014	1	<LOQ
Dimethoate	3.6600E-4	0.0096	0	<LOQ	Pyridaben	5.9000E-5	0.0096	3	<LOQ
Dimethomorph	2.7200E-4	0.0096	20	<LOQ	Spinetoram	3.4600E-4	0.0096	3	<LOQ
Ethoprophos	1.9200E-4	0.0096	0	<LOQ	Spinosad	2.8000E-5	0.00239	3	<LOQ
Etofenprox	1.1600E-4	0.0096	0	<LOQ	Spiromesifen	2.9100E-4	0.0096	12	<LOQ
Etoxazole	5.7000E-4	0.0096	1.5	<LOQ	Spirotetramat	1.4100E-4	0.0096	13	<LOQ
Fenhexamid	1.0110E-3	0.0096	10	<LOQ	Spiroxamine	1.1900E-4	0.0096	0	<LOQ
Fenoxycarb	1.6900E-4	0.0096	0	<LOQ	Tebuconazole	1.3400E-4	0.0096	2	<LOQ
Fenpyroximate	1.3900E-4	0.0096	2	<LOQ	Thiacloprid	3.9700E-4	0.0096	0	<LOQ
Fipronil	6.0500E-4	0.0096	0.1	<LOQ	Thiamethoxam	1.0400E-4	0.0096	4.5	<LOQ
Fonicamid	1.2800E-4	0.0096	2	<LOQ	Trifloxystrobin	8.8000E-5	0.0096	30	<LOQ
Fludioxonil	5.2100E-4	0.0096	30	<LOQ					

*Aixia Sun*  
Aixia Sun Lab Director/Principal Scientist  
D.H.Sc., M.Sc., B.Sc., MT (AAB)

Definitions are found on page 1

This report shall not be reproduced, without written approval, from ACS Laboratory. The results of this report relate only to the material or product analyzed. Test results are confidential unless explicitly waived otherwise. Accredited by a third-party accrediting body as a competent testing laboratory pursuant to ISO/IEC 17025 of the International Organization for Standardization.





# Certificate of Analysis

R&D

**Client Information:**

**CYPRESS HEMP LLC**  
10771 Perkins Rd  
Suite A  
BATON ROUGE, LA 70810

Batch # 1340  
Batch Date: 2023-11-27  
Extracted From: Hemp

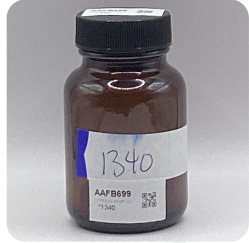
Test Reg State: Oregon

Order # CYP231127-170001  
Order Date: 2023-11-27  
Sample # AAFB699

Sampling Date: 2023-11-29  
Lab Batch Date: 2023-11-29  
Completion Date: 2023-12-04

Initial Gross Weight: 81.717 g  
Net Weight: 7.517 g

Number of Units: 1  
Net Weight per Unit: 2452.667 mg



Product Image



**Potency 10**  
Specimen Weight: 1534.900 mg

**Tested**  
SOP13.001 (LCUV)

**Potency Summary**

<b>Total Active THC</b> 0.198% 4.856 mg	<b>Total Active CBD</b> None Detected
<b>Total CBG</b> None Detected	<b>Total CBN</b> None Detected
<b>Other Cannabinoids</b> 0%	<b>Total Cannabinoids</b> 0.198% 4.856 mg

Pieces For Panel: 3

Analyte	Dilution (1:n)	LOD (%)	LOQ (%)	Result (mg/g)	(%)
Delta-9 THC	10.000	1.30E-5	0.015	1.980	0.198
CBC	10.000	1.80E-5	0.015	<LOQ	<LOQ
CBD	10.000	5.40E-5	0.015	<LOQ	<LOQ
CBDA	10.000	1.00E-5	0.015	<LOQ	<LOQ
CBDV	10.000	6.50E-5	0.015	<LOQ	<LOQ
CBG	10.000	2.48E-4	0.015	<LOQ	<LOQ
CBGA	10.000	8.00E-5	0.015	<LOQ	<LOQ
CBN	10.000	1.40E-5	0.015	<LOQ	<LOQ
THCA-A	10.000	3.20E-5	0.015	<LOQ	<LOQ
THCV	10.000	7.00E-6	0.015	<LOQ	<LOQ
Total Active CBD	10.000			<LOQ	<LOQ
Total Active THC	10.000			1.980	0.198

*Aixia Sun*  
Aixia Sun Lab Director/Principal Scientist  
D.H.Sc., M.Sc., B.Sc., MT (AAB)



Definitions and Abbreviations used in this report: Total Active CBD = CBD + (CBD-A \* 0.877), \*Total CBDV = CBDV + (CBDVA \* 0.87), Total Active THC = THCA-A \* 0.877 + Delta 9 THC, Total THC = THCv + (THCVA \* 0.87), CBG Total = (CBGA \* 0.877) + CBG, CBN Total = (CBNA \* 0.877) + CBN, Total CBC = CBC + (CBCA \* 0.877), Total THC-O-Acetate = Delta 8 THC-O-Acetate + Delta 9 THC-O-Acetate, Total THCP = Delta8-THCP + Delta9-THCP, Other Cannabinoids Total = Total Cannabinoids - All the listed cannabinoids on the summary section, Total Detected Cannabinoids = Delta6a10a-THC + Delta8-THC + Total CBN + CBT + CBE + Delta8-THCV + Total CBG + Total CBD + Total THCv + CBL + Total THC + Total CBC + Total CBDV + Delta10-THC + Total THC-O-Acetate + Total THCP. (mg/ml) = Milligrams per Milliliter, LOQ = Limit of Quantitation, LOD = Limit of Detection, Dilution = Dilution Factor (ppb) = Parts per Billion, (%) = Percent, (cfu/g) = Colony Forming Unit per Gram (cfu/g) = Colony Forming Unit per Gram, LOD = Limit of Detection, (µg/g) = Microgram per Gram (ppm) = Parts per Million, (ppm) = (µg/g), (aw) = Water Activity, (mg/Kg) = Milligram per Kilogram, ACS uses simple acceptance criteria. Passed - Analyte/microbe is not detected or is at the level below the action limit per OR rule OAR 333-007-0390, OAR 333-007-0400. Failed - Analyte/microbe is at the level that equal or above the action limit per OR rule OAR 333-007-0390, OAR 333-007-0400 Sample not received via laboratory sampling.

This report shall not be reproduced, without written approval, from ACS Laboratory. The results of this report relate only to the material or product analyzed. Test results are confidential unless explicitly waived otherwise. ACS Laboratory is accredited to the ISO/IEC 17025:2017 Standard.