



REVISED
Certificate of Analysis
R&D

Client Information:
CYPRESS HEMP LLC
10771 Perkins Rd
Suite A
BATON ROUGE, LA 70810

Batch # 1273
Batch Date: 2023-03-28
Extracted From: Hemp

Test Reg State: Oregon

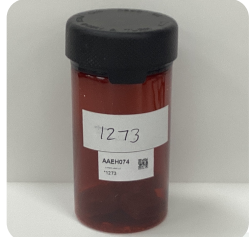
Order # CYP230328-020001
Order Date: 2023-03-28
Sample # AAEH074
Serving Number: 5.00000

Sampling Date: 2023-03-30
Lab Batch Date: 2023-03-30
Orig. Completion Date: 2023-04-02

Initial Gross Weight: 44.129 g
Net Weight: 13.070 g

Number of Units: 1
Net Weight per Package: 3267.500 mg
Net Weight per Serving: 653.5 mg

Statement of Amendment: Report format, Louisiana



Product Image

Potency Tested **Heavy Metals Passed** **Pesticides Passed** **Residual Solvents Passed** **Pathogenic Microbiology Tested**

Microbiology Petrifilm Passed

Potency 10
Specimen Weight: 1541.200 mg **Passed**
SOP13.001 (LCUV)

Pieces For Panel: 4

Analyte	Dilution (1:n)	LOD (%)	LOQ (%)	Result (mg/g)	(%)
CBD	100.000	5.40E-5	0.0015	4.9400	0.4940
Delta-9 THC	100.000	1.30E-5	0.0015	1.9900	0.1990
CBG	100.000	2.48E-4	0.0015	0.0800	0.0080
CBDV	100.000	6.50E-5	0.0015	0.0500	0.0050
CBC	100.000	1.80E-5	0.0015	0.0200	0.0020
CBN	100.000	1.40E-5	0.0015	0.0200	0.0020
THCV	100.000	7.00E-6	0.0015	0.0200	0.0020
CBDA	100.000	1.00E-5	0.0015	<LOQ	<LOQ
CBGA	100.000	8.00E-5	0.0015	<LOQ	<LOQ
THCA-A	100.000	3.20E-5	0.0015	<LOQ	<LOQ
Total Active CBD	100.000			4.940	0.494
Total Active THC	100.000			1.990	0.199

Potency Summary

Delta 9 THC per Serving 0.199%	1.3005mg	Total Active CBD per Serving 0.494%	3.2283mg
Total CBG per Serving 0.008%	0.05228mg	Total CBN per Serving 0.002%	0.01307mg
Other Cannabinoids per Serving 0.009%	0.05882mg	Total Cannabinoids per Serving 0.712%	4.6529mg
Total Active CBD Per Package 0.494%	16.1415mg	Total Active THC per Serving 0.199%	1.3005mg
Total Active THC Per Package 0.199%	6.5023mg	Delta 9 THC per Package 0.199%	6.5023mg

Residual Solvents - FL (CBD)
Specimen Weight: 12.500 mg **Passed**
SOP13.039 (GCMS)

Analyte	LOD (ppm)	LOQ (ppm)	Action Level (ppm)	Result (ppm)	Analyte	LOD (ppm)	LOQ (ppm)	Action Level (ppm)	Result (ppm)
1,1-Dichloroethane	0.0094	0.16	8	<LOQ	Heptane	0.0013	1.39	5000	<LOQ
1,2-Dichloroethane	0.0003	0.04	5	<LOQ	Hexane	0.068	1.17	290	<LOQ
Acetone	0.015	2.08	5000	<LOQ	Isopropyl alcohol	0.0048	1.39	500	<LOQ
Acetonitrile	0.06	1.17	410	<LOQ	Methanol	0.0005	0.69	3000	17.664
Benzene	0.0002	0.02	2	<LOQ	Methylene chloride	0.0029	2.43	600	<LOQ
Butanes	0.4167	2.5	2000	<LOQ	Pentane	0.037	2.08	5000	<LOQ
Chloroform	0.0001	0.04	60	<LOQ	Propane	0.031	5.83	2100	<LOQ
Ethanol	0.0021	2.78	5000	<LOQ	Toluene	0.0009	2.92	890	<LOQ
Ethyl Acetate	0.0012	1.11	5000	<LOQ	Total Xylenes	0.0001	2.92	2170	<LOQ
Ethyl Ether	0.0049	1.39	5000	<LOQ	Trichloroethylene	0.0014	0.49	80	<LOQ
Ethylene Oxide	0.0038	0.1	5	<LOQ					

Microbiology (Petrifilm)
Specimen Weight: 996.900 mg **Passed**
SOP13.033 (Petrifilm)

Analyte	LOQ (cfu/g)	Action Level (cfu/g)	Result (cfu/g)	Analyte	LOQ (cfu/g)	Action Level (cfu/g)	Result (cfu/g)
Aerobic Bacteria	10	10000	<10	Enterobacteriaceae	10	1000	<10
E. Coli / Coliform	10	100	<10	Yeast/Mold	10	1000	<10

Pathogenic Microbiology - S (MicroArray)
Specimen Weight: 1038.300 mg **Tested**
SOP13.019 (Micro Array)

Analyte	Result (cfu/g)
Salmonella	Absence in 1g

Aixia Sun
Aixia Sun Lab Director/Principal Scientist
D.H.Sc., M.Sc., B.Sc., MT (AAB)

Definitions and Abbreviations used in this report: Total Active CBD = CBD + (CBD-A * 0.877), *Total CBDV = CBDV + (CBDVA * 0.87), Total Active THC = THCA-A * 0.877 + Delta 9 THC, Total THC = THCV + (THCVA * 0.87), CBG Total = (CBGA * 0.877) + CBG, CBN Total = (CBNA * 0.877) + CBN, Total CBC = CBC + (CBCA * 0.877), Total THC-O-Acetate = Delta 8 THC-O-Acetate + Delta 9 THC-O-Acetate, Total THCP = Delta8-THCP + Delta9-THCP, Other Cannabinoids Total = Total Cannabinoids - All the listed cannabinoids on the summary section, Total Detected Cannabinoids = Delta6a10a-THC + Delta8-THC + Total CBN + CBT + CBE + Delta8-THCV + Total CBG + Total CBD + Total THCV + CBL + Total THC + Total CBC + Total CBDV + Delta10-THC + Total THC-O-Acetate + Total THCP. (mg/ml) = Milligrams per Milliliter, LOQ = Limit of Quantitation, LOD = Limit of Detection, Dilution = Dilution Factor (ppb) = Parts per Billion, (%) = Percent, (cfu/g) = Colony Forming Unit per Gram (cfu/g) = Colony Forming Unit per Gram, LOD = Limit of Detection, (µg/g) = Microgram per Gram (ppm) = Parts per Million, (ppm) = (µg/g), (aw) = Water Activity, (mg/Kg) = Milligram per Kilogram, Passed - Analyte/microbe is non-detected or at the level below the action limit, Failed - Analyte/microbe is at the level that equal or above the action limit, *Measurement of Uncertainty = +/- 10%

This report shall not be reproduced, without written approval, from ACS Laboratory. The results of this report relate only to the material or product analyzed. Test results are confidential unless explicitly waived otherwise. Accredited by a third-party accrediting body as a competent testing laboratory pursuant to ISO/IEC 17025 of the International Organization for Standardization.





Certificate of Analysis

R&D

Client Information:
CYPRESS HEMP LLC
10771 Perkins Rd
Suite A
BATON ROUGE, LA 70810

Batch # 1273
Batch Date: 2023-03-28
Extracted From: Hemp

Test Reg State: Oregon

Order # CYP230328-020001
Order Date: 2023-03-28
Sample # AAEH074
Serving Number: 5.00000

Sampling Date: 2023-03-30
Lab Batch Date: 2023-03-30
Orig. Completion Date: 2023-04-02

Initial Gross Weight: 44.129 g
Net Weight: 13.070 g

Number of Units: 1
Net Weight per Package: 3267.500 mg
Net Weight per Serving: 653.5 mg

Pesticides
Specimen Weight: 270.580 mg

Passed
SOP13.007
(LCMS/GCMS)

Dilution Factor: 5.540

Analyte	LOD (ppb)	LOQ (ppb)	Action Level (ppb)	Result (ppb)	Analyte	LOD (ppb)	LOQ (ppb)	Action Level (ppb)	Result (ppb)
Abamectin	2.8800E-1	28.23	300	<LOQ	Fludioxonil	1.7400E+0	48	3000	<LOQ
Acephate	2.3000E-2	30	3000	<LOQ	Hexythiazox	4.9000E-2	30	2000	<LOQ
Acequinocyl	9.5640E+0	48	2000	<LOQ	Imazalil	2.4800E-1	30	100	<LOQ
Acetamiprid	5.2000E-2	30	3000	<LOQ	Imidacloprid	9.4000E-2	30	3000	<LOQ
Aldicarb	2.6000E-2	30	100	<LOQ	Kresoxim Methyl	4.2000E-2	30	1000	<LOQ
Azoxystrobin	8.1000E-2	10	3000	<LOQ	Malathion	8.2000E-2	30	2000	<LOQ
Bifenazate	1.4150E+0	30	3000	<LOQ	Metalaxyl	8.1000E-2	10	3000	<LOQ
Bifenthrin	4.3000E-2	30	500	<LOQ	Methiocarb	3.2000E-2	30	100	<LOQ
Boscalid	5.5000E-2	10	3000	<LOQ	Methomyl	2.2000E-2	30	100	<LOQ
Captan	6.1200E+0	30	3000	<LOQ	methyl-Parathion	1.7100E+0	10	100	<LOQ
Carbaryl	2.2000E-2	10	500	<LOQ	Mevinphos	2.1500E+0	10	100	<LOQ
Carbofuran	3.4000E-2	10	100	<LOQ	Myclobutanil	1.0290E+0	30	3000	<LOQ
Chlorantraniliprole	3.3000E-2	10	3000	<LOQ	Naled	9.5000E-2	30	500	<LOQ
Chlordane	1.0000E+1	10	100	<LOQ	Oxamyl	2.5000E+0	10	500	<LOQ
Chlorfenapyr	3.4000E-2	30	100	<LOQ	Paclbutrazol	6.5000E-2	30	100	<LOQ
Chlomequat Chloride	1.0800E-1	10	3000	<LOQ	Pentachloronitrobenzene	1.3200E+0	10	200	<LOQ
Chlorpyrifos	3.5000E-2	30	100	<LOQ	Permethrin	3.4300E-1	30	1000	<LOQ
Clofentazine	1.1900E-1	30	500	<LOQ	Phosmet	8.2000E-2	30	200	<LOQ
Coumaphos	3.7700E+0	48	100	<LOQ	Piperonylbutoxide	2.9000E-2	30	3000	<LOQ
Cyfluthrin	3.1100E+0	30	1000	<LOQ	Prallethrin	7.9800E-1	30	400	<LOQ
Cypermethrin	1.4490E+0	30	1000	<LOQ	Propiconazole	7.0000E-2	30	1000	<LOQ
Daminozide	8.8500E-1	30	100	<LOQ	Propoxur	4.6000E-2	30	100	<LOQ
Diazinon	4.4000E-2	30	200	<LOQ	Pyrethrins	2.3593E+1	30	1000	<LOQ
Dichlorvos	2.1820E+0	30	100	<LOQ	Pyridaben	3.2000E-2	30	3000	<LOQ
Dimethoate	2.1000E-2	30	100	<LOQ	Spinetoram	8.0000E-2	10	3000	<LOQ
Dimethomorph	5.8300E+0	48	3000	<LOQ	Spinosad	8.8000E-2	30	3000	<LOQ
Ethoprophos	3.6000E-1	30	100	<LOQ	Spiromesifen	2.6100E-1	30	3000	<LOQ
Etofenprox	1.1600E-1	30	100	<LOQ	Spirotetramat	8.9000E-2	30	3000	<LOQ
Etoxazole	9.5000E-2	30	1500	<LOQ	Spiroxamine	1.3100E-1	30	100	<LOQ
Fenhexamid	5.1000E-1	10	3000	<LOQ	Tebuconazole	6.7000E-2	30	1000	<LOQ
Fenoxycarb	1.0700E-1	30	100	<LOQ	Thiacloprid	6.4000E-2	30	100	<LOQ
Fenpyroximate	1.3800E-1	30	2000	<LOQ	Thiamethoxam	5.0000E-2	30	1000	<LOQ
Fipronil	1.0700E-1	30	100	<LOQ	Trifloxystrobin	3.7000E-2	30	3000	<LOQ
Flonicamid	5.1700E-1	30	2000	<LOQ					

Heavy Metals
Specimen Weight: 251.600 mg

Passed
SOP13.048 (ICP-MS)

Dilution Factor: 198

Analyte	LOD (ppb)	LOQ (ppb)	Action Level (ppb)	Result (ppb)	Analyte	LOD (ppb)	LOQ (ppb)	Action Level (ppb)	Result (ppb)
Arsenic (As)	4.83	100	1500	<LOQ	Lead (Pb)	11.76	100	500	<LOQ
Cadmium (Cd)	.64	100	500	<LOQ	Mercury (Hg)	.58	100	3000	<LOQ

Aixia Sun
Aixia Sun Lab Director/Principal Scientist
D.H.Sc., M.Sc., B.Sc., MT (AAB)

Definitions are found on page 1

This report shall not be reproduced, without written approval, from ACS Laboratory. The results of this report relate only to the material or product analyzed. Test results are confidential unless explicitly waived otherwise. Accredited by a third-party accrediting body as a competent testing laboratory pursuant to ISO/IEC 17025 of the International Organization for Standardization.

